



Medical Imaging Department

DIAGNOSTIC MEDICAL SONOGRAPHY

Program Policy Manual

2025-2026



Diagnostic Medical Sonography Program Policy Manual Table of Contents

ITEM	PAGE
Introduction	3-6
1. Welcome	3
2. Program Learning Outcomes	5
3. Curriculum Framework	5
4. Program Goals and Objectives	6
5. Program Learning Domains	6
Department Mission	7
Accreditation Information	7
Communication	8
1. Directory	8
2. Channels of Communication and Delineation of Responsibilities	8
General Policies	9-14
1. Student Association Information	9
2. Health Requirement Policy	9-10
3. CPR Requirement	10
4. Pregnancy Policy	11
5. Technical Standards	11-12
6. Technology Support	12
7. Safety	12
a. College Safety and Security Policy	12
b. Cleary Act Policy	12
c. Student Accident/Incident Policy	13
d. Latex Sensitivity Statement	13
e. Contingency Plan Policy	13-14
General Diagnostic Medical Sonography Policies	14-17
Preparedness	17
1. Educational Plan	17
2. Student/Faculty Program Appointments	17
Ethics and Professional Conduct	17-19
1. Code of Ethics of the Society of Diagnostic Medical Sonography	17
2. Standards of Professional Conduct	17-18
3. Confidentiality/Privacy	18-19
4. Academic Integrity	19
5. Student's Own Work Policy	19
Student Success	19-20
1. Skills Acquisition Laboratory Offerings	19
2. Palisano Learning Center (PLC) link	19
3. Tutoring Services link	19
6. Time Management	19-20
Student Services	20

Academic Expectations (Classroom, Laboratory, Clinical)	20-24
1. Program Overview (Required Courses)	20
2. Classroom Policies and Procedures	20-21
3. Laboratory and Clinical Policies and Procedures	21-23
4. Scope of Practice	23
5. Faculty and Student Course/Laboratory/Clinical Expectations	23-24
Academic Progression	24-25
1. Progression Policy	24
2. Withdrawal Policy	25
Attendance Expectations	25-26
1. Lecture and Laboratory Attendance	25
2. College Closing/Cancellation of Classes	25
3. Clinical Attendance	25-26
4. Holidays	26
5. Bereavement	26
Exams	26-27
1. Course Exams	26
2. Grading Policy	27
3. Grading Scale	27
Reasonable Accommodation(s)	27
1. Services for Students with Disabilities (link to College Catalog)	
Non-Discriminatory Policy	27
1. Title IX and Non-Discrimination Resources	
Student Policies	28
1. Student Conferences/Meetings	28
Methods of Evaluation	28
1. Program Learning Outcomes	28
2. Course Level Outcomes and Course Assessment	28
3. Laboratory Evaluation	28
4. Clinical Evaluation	28
Student Files, Communicable Diseases & Medical Release	28-29
Clinical Affiliate Rights	30
Academic Policies	30
Program Completion	30
1. Program Completion Requirements	30
2. Mercy Action Project (MAP)	30
3. Graduation Requirements	30
4. Graduate Placement	30
Non-Compliance Form	31-32
Program Policy Manual Student Acknowledgement	33
1. Signature page	

Welcome to the Prospective/Incoming Student:

Our primary mission as a Catholic and Mercy institution is education excellence with a commitment to teaching and service. As a new student our program provides an inclusive environment where self-discovery and career development cultivate healthcare professionals.

As you embark on your professional journey in the Diagnostic Medical Sonography program, you will immerse in specialized training focused on academics, professionalism, and hands-on clinical experiences. We encourage students to participate in the Imaging Societies (Society of Diagnostic Medical Sonography). More involvement surrounding your chosen career in imaging affords more benefits, such as building relationships, developing problem-solving skills, and the freedom to explore other advanced imaging modalities.

The learning experiences you will encounter must be understood and adhered to according to the guidelines. To help you achieve a higher education at Trocaire College, we have created this manual to provide you with some basic guidelines and essential information. You will be asked to sign a "Memorandum of Agreement" verifying that you have read the manual and agree to abide by the policies and procedures presented within.

This instructional guide has been designed to supplement other Trocaire College official documents, not as a replacement. All DMS students are subject to the rules and regulations set forth by Trocaire College, the American Registry of Diagnostic Medical Sonography (ARDMS), and the Society of Diagnostic Medical Sonography (SDMS).

We are proud of the DMS program because of its extraordinary history and acclaimed reputation. We are especially proud of the students who have chosen to earn their imaging degrees at Trocaire College and who have remained dedicated to serving their community as healthcare professionals. In addition, years of reported program efficacy data reflect the high caliber and commitment to higher education by the students who have come before you. At the end of your two-year achievement, we aim for you to become part of the Trocaire College alumni.

Best Regards,

Jaime L. White, M.Ed., RT(R)(CT)
Medical Imaging Program Director

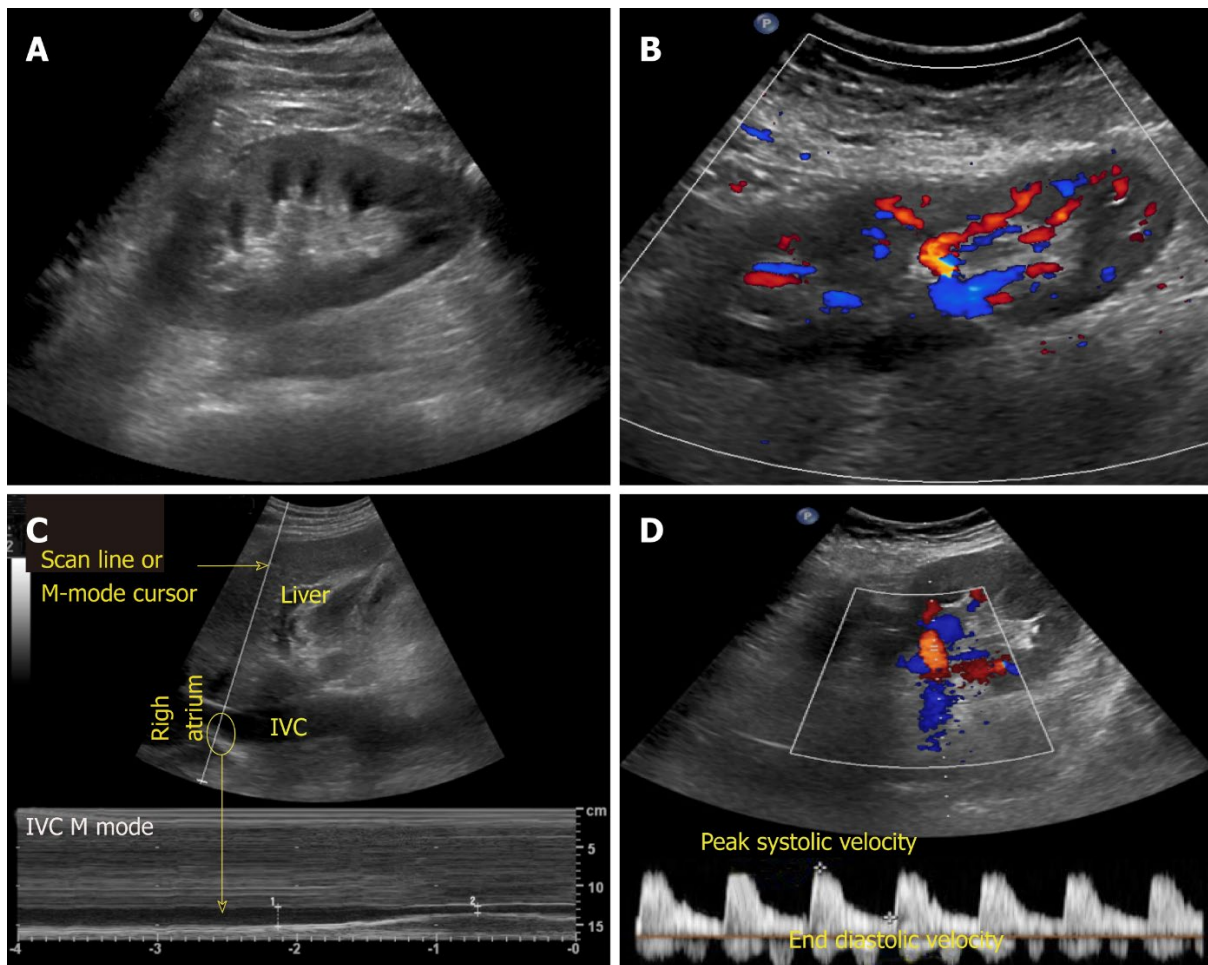
Adrienne Earsing, MS, RT(R), RDCS
Medical Imaging Clinical Placement Coordinator

Diagnostic Medical Sonography Policy Manual Statement

Trocaire College Diagnostic Medical Sonography Program reserves the right to change the policies contained within this handbook Program Policy Manual. Notice is optional for a new policy to take effect; however, the program will notify students promptly of any policy changes through website or email postings, mail distributions, or other methods deemed appropriate by the college administration.

All students will be bound by the policies described in the most recent edition of the Diagnostic Medical Sonography Program Policy Manual and those described in the Trocaire College Catalog.

All students engaged in school-related activities at off-campus locations, i.e., clinical education, are bound by the policies, agreements, or other stipulations set forth by the affiliate site and the policies set forth herein.



Introduction

If you are excited about becoming a safe, well-rounded, and knowledgeable Sonographer, this is the program for you! Diagnostic Medical Sonographers are trained healthcare professionals who perform medical imaging to assist a physician in diagnosing a patient's injury or illness. There are many components to obtaining high quality diagnostic images such as proper use of the equipment, positioning of the patient, selecting adequate technical factors, identification of pathology, etc. Our rigorous program will provide you with hands-on training in various medical facilities throughout the greater Western New York area in addition to what is taught in the classroom.

Program Learning Outcomes

Objective 1: At the end of the program, the student will demonstrate entry-level clinical competence

- The student will explain and utilize appropriate sonographic procedures and equipment
- The student will identify normal anatomy and sonographic pathology
- The student will utilize appropriate medical terminology

Objective 2: At the end of the program, the student will demonstrate effective communication skills

- The student will utilize appropriate oral communication skills
- The student will exhibit good written communication skills

Objective 3: At the end of the program, the student will employ critical thinking and problem-solving skills necessary to practice within the sonography profession

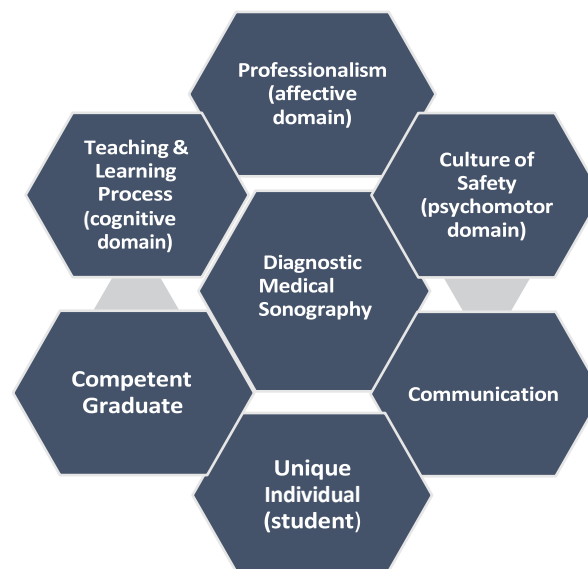
- The student will analyze images for diagnostic quality and correct for non-diagnostic appearance
- The student will revise procedure protocol for non-routine (trauma) procedures

Objective 4: At the end of the program, the student will demonstrate professional behaviors

- The student will practice the Code of Ethics as set forth by the SDMS and ARDMS
- The student will identify key professional organizations
- The student will understand the need for and create a professional development plan

The program mission and goals are assessed through analysis of didactic (academic) student learning outcomes, clinical competency, and program effectiveness data. Assessment is conducted continuously, and results are shared via the program website, department meetings, and program advisory committee meetings.

Curriculum Framework



Program Goals and Objectives

Diagnostic Medical Sonography program goals and objectives are based on the ARDMS driven goals of communication, critical thinking, professionalism, and clinical competence.

- 1) Students will demonstrate proper equipment operation and maintenance.
- 2) Students will obtain appropriate cardiac measurements.
- 3) Students will apply appropriate safety practices.
- 4) Students will provide effective patient care practices.
- 5) Students will demonstrate oral communication skills.
- 6) Students will be able to write effectively.
- 7) Students will demonstrate age-appropriate sonography skills.
- 8) Students will adapt standard procedures for non-routine patients.
- 9) Students will have the ability to work as a member of a team.
- 10) Students will demonstrate professionalism in the clinical setting.

Student Learning Outcomes

- 1) Students will perform appropriate safety practices.
- 2) Students will provide appropriate patient care.
- 3) Students will be able to adequately perform at entry level.
- 4) Students will position patients to yield diagnostic images.
- 5) Students will communicate effectively in writing and in speech.
- 6) Students and graduates will communicate effectively in the clinical setting.
- 7) Students and graduates will demonstrate professionalism and pursue professional growth.
- 8) Students will demonstrate acceptable professional behaviors in clinical practice.
- 9) Graduates will demonstrate acceptable ethical practices in clinical practice.
- 10) Graduates will demonstrate a commitment to or evidence of continued learning beyond graduation.
- 11) Students will demonstrate critical thinking skills.
- 12) Students will be able to perform non-route procedures.
- 13) Students will apply critical thinking skills to clinical applications.

Program Learning Domains

The DMS program utilizes Bloom's Taxonomy when creating learning outcomes. Bloom's Taxonomy comprises three learning domains: the cognitive, affective, and psychomotor, and assigns to each of these domains a hierarchy that corresponds to different levels of learning.

- 1) Cognitive Domain - The cognitive domain is focused on intellectual skills such as critical thinking, problem solving, and creating a knowledge base. The cognitive hierarchy extends from simple memorization designed to build the knowledge of learners, to creating something new based on previously learned information. In this domain, learners are expected to progress in a linear manner, beginning at "remember" and ending at "create."
- 2) Affective Domain - The affective domain focuses on the attitudes, values, interests, and appreciation of learners. The hierarchy associated with it begins with receiving and listening to information and extends to characterization or internalizing values and acting upon them. It focuses on helping learners understand what their own values are and how they have developed.
- 3) Psychomotor Domain - The psychomotor domain encompasses the ability of learners to physically accomplish tasks and perform movement and skills. This hierarchy ranges from reflexes and basic movement to non-discursive communication and meaningfully expressive activity.

Remembering		Understanding		Applying		Analyzing		Evaluating		Creating	
To find or recall information		To construct meaning from written material or graphics.		To use information in new situations.		To draw connections among ideas.		To value information or ideas		To produce new or original work.	
Define	Name	Associate	Estimate	Calculate	Modify	Break Down	Experiment	Appraise	Measure	Compose	Formulate
Draw	Outline	Classify	Explain	Change	Organize	Categorize	Illustrate	Argue	Rank	Construct	Generate
Duplicate	Recall	Compare	Identify	Classify	Plot	Combine	Inspect	Assess	Rate	Create	Produce
Identify	Recognize	Comprehend	Indicate	Compile	Practice	Connect	Predict	Conclude	Recommend	Criticize	Propose
Label	Select	Demonstrate	Interpret	Compute	Present	Contrast	Question	Convince	Score	Design	Revise
List	Show	Describe	Relate	Employ	Produce	Debate	Research	Evaluate	Select	Develop	Rewrite
Match	State	Differentiate	Restate	Execute	Show	Differentiate	Separate	Grade	Support	Direct	
		Discuss	Select	Illustrate	Solve	Distinguish	Simplify	Investigate	Test		
		Distinguish	Summarize	Implement	Use	Examine	Subdivide	Justify			
			Translate	Map	Write						
				Model							

Department Mission

Grounded in Mercy and service to the community, the Diagnostic Medical Sonography Program at Trocaire College provides students with the theoretical foundation, laboratory skills, and clinical experiences that enable them to become compassionate and competent entry-level sonographers. Adhering to the positive characteristics and ethics of the profession, Trocaire College students graduate with a dedication to self and others, delivering quality care to culturally diverse patients while continually striving to improve their knowledge of the field. The program embraces the mission and the operative principles of Trocaire College in presenting a comprehensive education to its students.

Accreditation Information

Accreditation is the process to ensure that school, post-secondary institutions, and other education providers meet, and maintain minimum standards of quality and integrity regarding academics, administration, and related services. The Council of Higher Education Accreditation (CHEA) defines accreditation as "A review of the quality of higher education institutions and programs. In the United States, accreditation is a major way that students, families, government officials, and press know that an institution or program provides a quality education".

Communication

Directory

Name/Title	Office Room/Office Number
Jaime White Medical Imaging Program Director	Office Room: 422 Office Phone: 716.827.2494 Email: WhiteJ@Trocaire.edu
Adrienne Earsing Medical Imaging Clinical Placement Coordinator	Office Room: 427 Office Phone: 716.827.2443 Email: EarsingA@Trocaire.edu
Elizabeth Russo Operations Coordinator for Health Sciences and General Studies	Office Room: 419 Office Phone: 716.827.2484 Email: RussoE@Trocaire.edu
Terra ManWarren Adjunct Instructor, Diagnostic Medical Sonography Program	Email: ManWarrenT@Trocaire.edu
Iqra Chaudhry Adjunct Instructor, Diagnostic Medical Sonography Program	Email: ChaudhryIq@Trocaire.edu
Emily Beneduce Clinical Instructor, Diagnostic Medical Sonography Program	Email: BeneduceE@Trocaire.edu

Diagnostic Medical Sonography Channels of Communication

The following process should be followed should a student feel the need to speak to someone in Medical Imaging. All course level concerns should first be addressed with the assigned faculty member. All clinical level concerns should be addressed with the Clinical Placement Coordinator.

STEP I – Arrange to meet with the Faculty member directly involved (professor, advisor, adjunct, and/or clinical preceptor)

STEP II – If the matter is of clinical nature, arrange to meet with the Clinical Placement Coordinator: Mrs. Adrienne Earsing

STEP III – If the matter is unresolved, arrange to speak to the Program Director: Ms. Jaime White

STEP IV – If the matter remains unresolved, student should move to the formal appeal process via completion and submission of the Appeal of Academic Decision Form.

Delineation of Responsibilities

Persons desiring to meet with Faculty, Clinical Placement Coordinator or Program Director are required to schedule an appointment with Elizabeth Russo (Operations Coordinator of Health Sciences and General Studies). Phone: (716)-827-2484. Email: RussoE@Trocaire.edu.

The Program Director is responsible for the management and overall success of the Diagnostic Medical Sonography Program, including meeting and maintaining education standards. The duties of the program director consist of curriculum development and evaluation, student recruitment and retention efforts, program and course level outcomes assessment, and student performance and engagement assurance.

The Clinical Placement Coordinator will carry out responsibilities that ensure high quality, well-coordinated student clinical experiences. This individual oversees all clinical operations and activities, works closely with clinical affiliates, and manages all clinical assignments.

Didactic faculty are those instructors responsible for classroom and laboratory instruction, including lectures, Blackboard lessons, and hands-on instruction in the classroom lab on campus. These instructors plan, develop, and manage courses within the program under the direction of the Program Director. Faculty also act as academic advisors to students in the second year of the program.

Clinical Preceptors, also called Clinical Instructors, oversee the clinical educational experience students engage in at the clinical site. They conduct evaluations of student performance, assist students with

examinations, complete procedure competencies, and generally supervise all on-site clinical activities. Clinical Preceptors maintain close communication with the Clinical Placement Coordinator.

General Policies

Student Association Information

Student Clubs and Organizations: The unique size of our college allows students to participate in different clubs and organizations and take on leadership roles if they wish to do so. The benefits of becoming a student leader are tremendous – skills that will last a lifetime. For further information please click on the following link: <https://trocaire.edu/student-life/student-clubs-organizations/>.

Lambda Nu – the National Honor Society for the radiologic and imaging sciences. The Trocaire Chapter, New York Beta, recognizes outstanding students who have demonstrated exemplary scholarship and dedication to their chosen profession <https://trocaire.edu/academics/academic-program/diagnostic-medical-sonography/>

Health Requirement Policy

As a major educator of healthcare professionals in the Buffalo-Niagara region, it is our duty to prioritize the health, safety, and well-being of Trocaire students, employees, and the community at large. Accommodations will be made for medical or religious reasons consistent with applicable federal and state law.

New York State Public Health Law 2165 requires all students attending New York State Colleges and Universities to show proof of immunity against measles, mumps, and rubella. Full-time and part-time students must show proof of immunization. Persons born before January 1, 1957, are exempt from the requirement. In addition, all students must complete and return a Meningitis Response Form.

The Wellness Center at Trocaire has teamed up with CastleBranch, a secure, web-based platform for submission and management of student health and immunization records. The Medical Imaging Program Placement Coordinator manages program specific student health records in CastleBranch. As a Trocaire student, you will have access to CastleBranch's document tracking system, which allows you to upload and manage all required health records. The Wellness Center is located on the main campus, room 137. Phone: 716.827.2579. Email: WellnessCenter@Trocaire.edu.

Students are required to submit and maintain compliance with the following:

Clinical Requirement:	Required Acceptable Documentation:	Frequency:
Physical Exam	<ul style="list-style-type: none"> Must include Medical History Form (completed by student) Completed by licensed medical provider; must be documented on a Trocaire College form 	Annually – within 12 months
Measles/Mumps/Rubella (MMR) – one option must be met	<ul style="list-style-type: none"> Two doses after 12 months of age OR Measles (Rubeola) two immunizations after 12 months OR blood titer documenting immunity AND Rubella (German Measles) one immunization after 12 months of age OR blood titer documenting immunity 	One time
Meningococcal/Meningitis	<ul style="list-style-type: none"> Meningococcal immunization OR Meningococcal declination form (annually) 	Every 5 years
TB (PPD) or QuantiFERON	<ul style="list-style-type: none"> New test required yearly A recent copy from your employer is acceptable If any previous test was positive, list test type, treatment dates and latest x-ray date/result, include copy of x-ray report and TST Annual Symptoms Review form 	Annually – within 12 months
Varicella (Chickenpox or Shingles) – one option must be met	<ul style="list-style-type: none"> Two doses of immunizations OR Blood titer documenting immunity 	One Time

Hepatitis B – one option must be met	<ul style="list-style-type: none"> • Vaccine – complete series (2-4 doses depending on vaccine type) OR • Positive Hepatitis B Antibody Test OR • Signed declination for (annually) 	One Time
Tetanus Pertussis-Diphtheria (TDAP)	<ul style="list-style-type: none"> • Vaccine series as a child AND • Tetanus-Diphtheria booster less than 10 years ago 	One Time and Every 10 years
Influenza (Flu shot)	<ul style="list-style-type: none"> • Immunization for current flu season OR • Signed declination form and mask compliance per site protocol 	Annually – due by 9/15 of every year
COVID	<ul style="list-style-type: none"> • Johnson & Johnson OR Pfizer OR Moderna OR • Signed declination form and mask compliance per site protocol 	One time
CPR/BLS for the Healthcare Provider Certification	<ul style="list-style-type: none"> • Certification in Basic Life Support CPR that fulfills ILCOR standards • Any provider level course (AHA, Red Cross, etc.) that meets ILCOR standards • Hybrid (online didactic coursework with hand-on skills competency) OR traditional classroom-based models for the full training • Online only is NOT accepted 	Must remain current the entire length of program
HIPAA	<ul style="list-style-type: none"> • Available on BlackBoard 	Annually – within 12 months
Consent to Release Medical Information	<ul style="list-style-type: none"> • Form found on Trocaire website, use link below 	One time

Additional health records information, including forms, can be found at <https://my.trocaire.edu/student-services/health-office>

CPR Requirement

CPR certification must be submitted prior to the start of clinical in the first fall semester and must be kept current for the duration of the DMS Program. Students who are not in compliance will not be allowed to participate in clinical experience until this requirement has been met, and the absence(s) will be counted as unexcused.

Acceptable CPR (2-year) Certifications:

American Heart Association BLS for the Healthcare Provider Level American Red Cross BLS/CPR for Healthcare

*Online only classes are NOT accepted; students must participate in a hands-on practical class

Students must submit proper documentation of all required health information or provide a documented statement of medical/religious exemption prior to the commencement of classes, clinical and/or continuation in the Program. Yearly health physical, TB tests, flu vaccines, and HIPAA are required. Students who do not meet these requirements will not be permitted to participate in classes, clinics, or laboratory experiences. Should a student elect not to be vaccinated against the flu, the student must sign the “Declination of Influenza Vaccination for Health Care Personnel” form and could be expected to wear a surgical mask at all times during clinical rotations. The student is expected to be responsible for remaining compliant with updates of all required immunizations test results, medical clearance forms, and annual health assessments. Failure to do so will result in the suspension of clinical experiences and, in some cases, suspension from class attendance and, possibly, the Program. Be advised that Trocaire College must provide student health information to clinical agencies as required by New York State Department of Health regulations and legal contracts with affiliating agencies. Students are advised that the College and the clinical agencies associated with the Medical Imaging Programs will rely upon the health information supplied by the student. Any student who withholds or knowingly submits incorrect/inaccurate health information shall be subject to disciplinary action. Please click on the following link for further information <https://trocaire.edu/student-life/wellness-center/health-records/>

Pregnancy Policy

Should any student suspect pregnancy, it is HIGHLY RECOMMENDED that the student meets with the Program Director, Clinical Placement Coordinator, and Title IX Coordinator <https://trocaire.edu/title-ix/>. However, disclosure is VOLUNTARY, and declaration/withdrawal of such declaration must be made in writing.

Pregnant students are encouraged to meet and work with the Title IX Coordinator <https://trocaire.edu/title-ix/>. Students with pregnancy-related disability, like any student with a short-term or temporary disability, are entitled to reasonable accommodation so that they will not be disadvantaged in their course of study and may seek assistance from the Title IX Coordinator. Pregnant students may voluntarily choose to withdraw from the course or program without penalty. In accordance with Title IX, students are also allowed time to pump breast milk. For information and resources for pumping breastmilk, please contact the Title IX Coordinator.

The pregnant student has the right to decide whether to declare pregnancy or not. This voluntary decision can be withdrawn at any time. (Declared pregnant woman means a woman who has voluntarily informed the department in writing of her pregnancy.) If she chooses to do so, the declaration of pregnancy must be in writing. The student will complete and submit the form titled "Pregnancy Declaration."

Upon declaration of pregnancy by the student, the following procedure will be followed:

The student will submit a statement from her physician verifying pregnancy and expected due date. The statement must include the physician's recommendations as to which of the following options would be advisable:

- a. Withdrawal from the program with the possibility to return to the program at a later time and begin at the start of the semester/session that was not completed
- b. Continuation at full-time status without restrictions in clinic, classroom, or laboratory
- c. The physician's statement (medical clearance) shall be submitted to the the Program Director.
- d. Additionally, a pregnant student has the right, at any time, to withdraw/revoke the declaration of pregnancy in writing. Should that occur, the student will return to previous clinical expectations/experiences.

Technical Standards

Specific essential abilities or technical standards have been identified by the Medical Imaging Department for the Sonography applicant/student, in accordance with Section 504 of the Rehabilitation Act of 1973 and the 2009 Americans with Disabilities Act Amendment. These technical standards include all of the non-academic abilities essential for the delivery of safe and effective patient care. These standards are designed to establish performance expectations that will enable students to deliver safe, effective care during clinical practice activities, with or without reasonable accommodation. Qualified applicants and students are expected to meet all admission criteria, as well as these technical standards, with or without accommodation, and to maintain related satisfactory demonstration of these standards for progression through the program. The Medical Imaging Department Diagnostic Medical Sonography Program is committed to enabling students with identified disabilities by reasonable means or accommodation to complete the academic and experiential learning required for the completion of all degree programs.

Therefore, any applicant or student who seeks accommodation at the time of admission or at any time during progression in the program will be evaluated and receive an assessment of the types of reasonable accommodation needed for the clinical practice component of the program.

The technical standards that have been identified as necessary to meet the DMS program requirements include, but are not necessarily limited to the following:

- 1) Stand and walk continually for up to 10 hours at a time.
- 2) Frequently participate in team lifting of up to 300 pounds.
- 3) Lift up to 20 pounds from the floor, carry the load for 10 feet, and place the load on a surface 36 inches

from the ground.

- 4) Safely and successfully lift, move, push, pull, kneel, bend, hold, and grasp during the care of patients and with all professional duties.
- 5) Move and manipulate exam room equipment such as tables, wheelchairs, and exam room carts.
- 6) Have correctable vision in one eye to 20/20 and 20/40 in the other eye, with visual acuity, depth perception, and the ability to distinguish shades of grey and gradations in color.
- 7) Have the olfactory ability to detect smoke, noxious odors, and patient conditions.
- 8) Hear faint sounds from a distance of 6-10 feet and with a stethoscope (with/without hearing aids).
- 9) Communicate with faculty members, fellow students, staff, and other healthcare professionals verbally and in a recorded format (writing, electronically, telephone, etc.) in the English language.
- 10) Demonstrate psychological stability to perform professionally and effectively during stressful, fast paced, high-volume, traumatic, emergent, and fatal situations.
- 11) Perform resuscitation and emergency procedures.
- 12) Physical, mental, and emotional stamina and overall well-being are essential to being able to perform the duties of a student Sonographer in an effective and efficient manner.

A student who is unable to meet program objectives because of medical restrictions will be required to withdraw from the respective program.

If there is any reason a student cannot meet the expectations described above, with or without reasonable accommodations, it is the responsibility of the student to notify the Program Director and/or Clinical Placement Coordinator as soon as possible. Note: A student may be removed from the clinical site for reasons related to the student's physical or emotional safety and well-being and/or for reasons relating to unprofessional conduct, safety, and/or the well-being of patients, students, faculty, or hospital property.

Technology Support

For Diagnostic Medical Sonography courses with content delivered in the online format, it is the student's responsibility to make sure they have access to a working computer, or mobile device that can uphold the LMS (Blackboard) requirements and WI-FI to complete the course requirements. Please see course syllabi for specific course technology use and requirements.

For account access, password reset, campus-wide technology troubleshooting (e.g. Microsoft 365, Trocaire-owned devices, etc.), contact the Information Technology Help Desk: helpdesk@trocaire.edu. For support with Blackboard or Panopto, contact Blackboard Support: blackboard@trocaire.edu.

Student ID

Each DMS Student is required to obtain a Trocaire student ID badge with picture, first and last name, and identifying as a student. Students are required to always wear their student ID badge while on campus and while at the clinical site.

College Safety and Security Policy

Please refer to the current College Catalog <https://trocairecollege2024-2025.catalog.prod.coursedog.com/about/consumer-info-crime-stats> in addition to the following:

- Campus Safety and Security at Trocaire College works in conjunction with students, faculty, and staff to ensure their security throughout the campus. Trocaire employs uniformed guards through a private security service. The guards work closely with the Buffalo Police Department.
- In order to support emergency services on and around the Trocaire campus, we rely upon a strong working relationship with not only the Buffalo City Police Department but also the Buffalo Fire Department. We also call on the services provided by local first responders.
- For additional information, contact the Coordinator of Safety and Security, Office 120 Safety@Trocaire.edu.

Cleary Act Policy

In keeping with the Cleary Act, the College provides vital information and statistics about incidents on and around the campus community in an annual security report published on the Department of Education website. We believe in a well-informed community; in keeping with this, notices of pertinent security related

happenings and incidents are posted on security boards throughout campus.

Student Incidents/Injuries

A student must immediately report incidents to an instructor and the appropriate facility personnel. When an incident occurs at a clinical site (i.e., student injury or patient/client-related mishap), the appropriate facility and College forms must be completed and submitted to the CPC. The CPC must report all student injuries to the Safety and Security Office for completion of necessary paperwork. This should be done as soon as possible after the occurrence of the incident.

Latex Sensitivity Statement

If you think you may have an allergy to latex, please see a physician who can administer a blood test to determine your sensitivity. If it is determined that you are sensitive to latex, you should notify your instructors, who can help minimize your exposure to latex products. Additionally, complete the "Latex Sensitivity" form and submit it to the Clinical Placement Coordinator.

Fire Safety

If the alarm sounds, all occupants of the building must evacuate immediately. Close office and classroom doors. Should an alarm sound while an exam is being taken, hand exams and answer sheets to the instructor as you exit the room unless your safety is otherwise jeopardized.

Crime Prevention

The key to a safe and secure environment in any area is crime prevention. Campus Safety and Security utilizes uniformed guards in most cases when classes are in session. The college also utilizes security cameras which are installed in several areas on campus. Crime prevention is a joint effort, however, and cannot be accomplished without the assistance of the entire Trocaire community of students, faculty, and staff. The security committee has composed a list of several crime prevention and safety tips, which are distributed at the beginning of each semester.

In addition to uniformed security officers, there is a campus-wide Security Advisory Committee comprised of faculty, staff, administration, and students.

- Campus Safety and Security Phone Numbers Main Desk Choate Campus: 716-827-2500
Choate Campus Emergency (only after 6:30 pm, use an outside line): 716-445-2104

Contingency Plan Policy

In the event of a catastrophic event that prohibits the normal operation of college business, the Diagnostic Medical Sonography program will follow the protocol outlined below unless superseded by Trocaire College contingency plan/policy:

Communication: The Program Director will send an email to all students and faculty/staff identifying the nature of the event and instructions for conducting business within reasonable accommodations.

Instruction: If physical presence on campus is not allowable due to health or safety concerns, instruction will be conducted online until a time when a return to campus is possible.

Lab: If permitted by circumstances, students will be allowed on campus for labs in reduced numbers. If conditions bar on-campus labs, alternate solutions will be sought by the Program Director based on the length of time such activities are not allowed. These could include but may not be limited to extension of the program, simulation programs, and make up time once a return is possible.

Clinical: Whenever possible, all efforts will be made to continue to allow students to attend clinical rotations. However, if students are unable to participate in clinical education, alternate solutions will be sought out by the Program Director based on the length of time such activities are not allowed. These could include (but may not be limited to) the following: extension of the program, simulation programs, and make up time once a return is possible.

Critical Support Services: Faculty and staff will be available to the student via college email to address any questions or concerns and to facilitate the continuation of the educational experience.

The College will prescribe college wide support services.

Timeframe: The length of time for which these protocols are implemented will be determined by the nature of the event, the College, and possibly external entities. The Program will make all attempts to return to normal operating practice as soon as possible, keeping in mind the safety of the students and the community.

*A catastrophic event is defined as any event that could affect student learning and program operations and will be determined by the College, State, or Federal Government.

General Diagnostic Medical Sonography Policies

Physical, Mental and Emotional Health

Physical, mental and emotional stamina and overall well-being are essential to being able to perform your duties as a student sonographer in an effective and efficient manner. Working conditions and environments vary on a daily basis; the imaging department, at the bedside of patients, in the operating room, in the emergency department, manipulating mobile and stationary equipment, transfer of patients, etc.

Vision Statement

Visual acuity is necessary for watching patients' vital signs and for accurate image acquisition for all radiographic examinations.

Hearing and Speech Statement

Hearing and speech need to be sufficient to communicate effectively and efficiently with all patients. Communication includes not only speech but also reading and writing. The applicant/student must be able to:

1. Read and comprehend technical and professional materials
2. Follow verbal or written instructions in order to correctly and independently perform procedures
3. Clearly instruct patients prior to, during, and after procedures
4. Communicate with faculty members, fellow students, staff, and other healthcare professionals verbally and in a recorded format (writing, electronically, telephone, etc.)

Manual Dexterity

The applicant/student must have manual dexterity and good physical coordination to position patients and to operate and transport radiographic equipment with a full range of motion, utility of arms, hands, and fingers to perform examinations and operate the equipment. This is also necessary to assist patients on and off examination tables and to assist patients and other professionals with lifting patients out of wheelchairs and off gurneys and onto examination tables when necessary. The applicant/student must be able to push and maneuver mobile equipment, patients in gurneys, and patients in wheelchairs, along with patient equipment in and out of the exam, holding areas, hallways, elevators, and patient rooms.

Intellectual

The applicant/student must possess the intellectual skills that promote the ability to properly comprehend various medical and managerial situations. These include but are not limited to acquiring accurate measurements; performing mathematical calculations properly and quickly; solving problems using advanced critical thinking skills; implementing mature decision-making and reasoning; analyzing and critiquing images for density, contrast, anatomical detail, and proper positioning; using self-expression appropriately and accepting constructive criticism. They must be able to exercise sufficient judgment to recognize and correct performance deviations. Sonographers must be prepared to recognize any condition, whether observed in the radiographic image or in patient behavior, which may pose an immediate threat to the health, safety, or life of the patient and/or others and react quickly and appropriately.

Behavioral and Social

The Diagnostic Medical Sonography applicant/student must be able to manage time to complete didactic and clinical tasks within realistic time constraints. They must possess the emotional health and stability necessary

to effectively employ intellect and exercise appropriate judgment during times of stress, surgical and emergency procedures, and with diverse patient populations and conditions. The Sonographer must be able to provide professional and technical services despite the stresses of heavy workloads. They need to demonstrate the ability to be flexible, creative, and adaptable to clinical and didactic changes. Sonographers need to be able to recognize potentially hazardous materials, equipment, and situations and be able to proceed safely to reduce the risk of injury to a patient and/or themselves. A Sonographer supports and promotes the activities of fellow students and health care professionals by displaying honesty, compassion, ethics, and responsibility. Sonographers always safeguard and preserve the confidentiality of patient information in accordance with policy. Sonographers interact with various people in the course of their duties and must be able to appropriately interact with them to obtain necessary information and to perform examinations.

Drug and Alcohol Policy

Substance abuse is a major health problem throughout the United States, and Trocaire College is committed to establishing a drug- and alcohol-free environment. Trocaire College Policy #604 addresses drug and/or alcohol use, explicitly prohibiting such use on campus or at off-campus college events. Clinical site violations are directed to the specific program for regulation. As such, the Medical Imaging Department has implemented the following Drug Testing Policy:

Trocaire College Medical Imaging Department seeks to assure the physical safety of its students, employees, and those we serve. Therefore, consistent with state and federal laws, including Higher Education Assistance Act and the Drug-Free Workplace Act, and to protect the safety of all students and stakeholders, the Medical Imaging Department adopts the following policy designed to prevent the illicit use of drugs and the abuse of alcohol by students. The Program will conduct reasonable suspicion drug and alcohol testing at the Program's expense.

Reasonable Suspicion Testing

Student drug and alcohol testing will occur whenever the Program has a reasonable suspicion that a student is under the influence of alcohol, illegal drugs, or controlled substances while at clinical or in the laboratory setting. Reasonable suspicion testing must be based on specific observations concerning the appearance, behavior, or speech of a student. When an incident occurs that leads the observer to believe that drugs or alcohol may be involved, including any accident that results in or has the potential to cause injury or property damage, the suspected student's supervisor (Clinical Preceptor, Lab Instructor) and Program Director must immediately be notified to review the circumstances and facts related to the incident in order to ascertain the merits of the observation and to specify further action.

If testing is required, the supervisor is responsible for arranging for the student to be safely transported to and from the testing laboratory. The Program Director will create a written record of the observation leading to a drug or alcohol test by interviewing those people who observed the incident. The written record must be completed within 24 hours of the observed behavior. The Program reserves the right to determine whether reasonable suspicion exists.

Drug testing will generally be conducted by urinalysis for drugs and by breathalyzer for alcohol and will include testing for the following drugs: Marijuana (THC), Cocaine, Opiates, Barbiturates, Amphetamines (including Methamphetamines), and Alcohol. The Program will engage the services of a qualified testing laboratory. The appropriate testing site may vary and will be determined when a test is required.

Consent, Cooperation, and Consequences

Individuals taking a drug and/or alcohol test must sign an appropriate release to allow the laboratory to release the test results to the Program Director or their designee.

Disciplinary Action Policy

Any student who refuses to consent to drug and/or alcohol testing, tampers with a sample, tests positive, or otherwise violates this policy may be subject to disciplinary procedures and sanctions listed in the College Catalog, including probation, suspension, or dismissal

A student may be required to participate in follow-up care as part of a comprehensive drug and/or alcohol treatment program as a condition of continuing their education with the Program or as part of the disciplinary process. Depending on the nature of the conduct that led to the student's required participation in a drug and/or alcohol treatment program, the student may be required to submit to random drug or alcohol screenings for a specific period and to meet performance standards that are imposed as a condition of their continuation in the Program.

Rehabilitation Policy

The Program attempts to provide students with the opportunity to deal appropriately with drug and alcohol-related problems. Any student who voluntarily requests assistance in dealing with a drug and/or alcohol problem is encouraged to seek professional counseling for an assessment with an accredited professional and, if appropriate, enter a treatment program.

Confidentiality Policy

All medical information, including drug or alcohol test results or treatment, will be treated as confidential medical information and will be accessible only to those Program administrators and designated medical and professional persons with a specific need to know.

Disciplinary Action Policy

Disciplinary action will be initiated if an Echo student fails to follow program policy guidelines, meet program requirements, and/or threaten the safety of self, patient, or clinical staff. This will include the use of the Non-Compliance Form with progressive consequences potentially leading to Program dismissal should infractions not be rectified accordingly. Students are also expected to follow the Trocaire College Catalog and Student Handbook. Consequences may include probationary measures, grade adjustments, or Program dismissal.

Social Media Policy

The student will respect the policies of confidentiality related to social media. Any statements, pictures, or expressions that could cause harm or injury to an individual or to the College will be considered grounds for dismissal from the program. Recording of the class is prohibited without prior approval. This includes tape recordings, video recordings, mobile/cell phone recordings, etc. Under no circumstance may any item be posted to online services such as YouTube, Facebook, Instagram, Twitter, etc.

Cell Phone Policy

Students are prohibited from using personal electronic devices (i.e. cell phones, smart watches, or wireless devices) in verbal or text mode during classroom, laboratory, or clinical. Cell phones must be silenced or shut off and out of sight during class/laboratory. Cell phones will not be used as a timepiece or calculator. Students are permitted to access electronic devices only for documenting time and completing electronic paperwork. Any use of electronic devices for personal reasons during classroom, laboratory, or clinical areas is a breach of standards of professional behavior. Personal cell phones are not to be worn on a student's person while at the clinical education center. Phones may only be used for necessary personal business with the permission of the faculty and clinical preceptors only. Failure to abide by the cell phone policy is subject to the Medical Imaging Department Non-Compliance Form.

Fraternization Policy

You are entering a field that requires you to conduct yourself professionally, both at the College and your clinical site. Your role is that of a student, and you must conduct yourself accordingly. Fraternization with the faculty, clinical instructors, technologists, or members of the Diagnostic Medical Sonography Program is strictly prohibited while enrolled in the program. This includes but is not limited to personal phone calls, texting, going out to eat/drink, "hanging out" after clinical hours, dating, or communicating/friending them on

social media networks. The faculty, clinical instructors, clinical facilities staff, and Diagnostic Medical Sonography Program members are your professional leaders, not your personal friends.

Please remember your role as a student and treat the faculty, clinical instructors, technologists, and members of the DMS Program with respect. These individuals are here to be your instructors and professional mentors in the field, and in order to have fairness and equity for all students, they must be treated professionally.

Preparedness

Educational Plan

Your education plan is a roadmap that helps you stay on track to achieve your academic and career goals. It can help you determine what courses to take each semester, and when to take them, so you can graduate as soon as possible. You can develop an ed plan with your advisor, and it may include orientation, assessment, and educational planning. When discussing your educational goals, you can try to be specific and provide concrete examples, such as the degree you want to pursue, skills you want to gain, or a job you want to get after graduation. Please click on the following link for further information and to view Diagnostic Medical Sonography Degree Audit: <https://trocaire.edu/academics/academic-program/diagnostic-medical-sonography/>.

Student-Faculty Appointments

Students may make appointments to see faculty members during scheduled office hours or at other pre-arranged times. Office hours can be found posted on individual office doors and in the course syllabus. Faculty may also be contacted by leaving a message via voicemail or email.

Ethics and Professional Conduct

Code of Ethics for the Profession of Diagnostic Medical Sonography

“This Code of Ethics aims to promote excellence in patient care by fostering responsibility and accountability among diagnostic medical sonographers, thereby maintaining and elevating the integrity of the profession. It serves as a guide and framework for addressing ethical issues in clinical settings, business practices, education, and research.”— Society for Diagnostic Medical Sonography

SDMS’s Core Principles are to promote patient well-being, to promote highest level of competent practice, and to promote professional integrity and public trust. A full list of the Code of Ethics can be found on SDMS’s website: <https://www.sdms.org/about/who-we-are/code-of-ethics>

Standards of Professional Conduct

Diagnostic Medical Sonography students are expected to uphold a high standard of professional conduct, including acting in a professional manner, respecting patient needs and privacy, and adhering to ethical principles. They should demonstrate integrity, responsibility, and commitment to patient care. Specific standards include respecting confidences, practicing with knowledge and scope, and acting in the best interest of the patient.

Professional conduct is assessed by attendance, appropriate participation as part of a course requirement, and by general comportment during a student’s tenure in the DMS program. The faculty has an obligation to the students, to the school, and to society to evaluate students and promote and graduate only those who have demonstrated their suitability for the practice of Sonography both in cognitive and in noncognitive areas such as clinical ability, interpersonal relations, personal conduct and professional characteristics. The policy includes (but is not limited to) the following student expectations:

Patient-Centered Care:

Students must prioritize patient needs and comfort, providing compassionate and sensitive care.

Ethical Behavior:

Adhering to the Code of Ethics, including respecting patient confidentiality, using equipment appropriately,

and maintaining professional relationships.

Competence and Responsibility:

Demonstrating a strong understanding of imaging techniques and procedures and taking responsibility for actions.

Respect for Colleagues and the Profession:

Maintaining a positive work environment, affording respect to those around me with actions and words, collaborating with other healthcare professionals, and upholding the standards of the profession.

Professional Appearance and Communication:

Maintaining a clean, neat, and professional appearance and communicating effectively with patients, families, and colleagues.

By adhering to these standards, Sonography students demonstrate their commitment to the profession and prepare themselves for a successful and ethical career in medical imaging.

As a student in the Diagnostic Medical Sonography Program:

- I acknowledge and accept the privileges and responsibilities given to me today as a student in training and dedicate myself to providing care to those in need.
- I will approach all aspects of my education with honesty and integrity, embracing opportunities to learn from patients, instructors and colleagues.
- I will always maintain the highest standards of professional conduct.
- I will certify only that which I have personally verified, and I will neither receive nor give unauthorized assistance on examinations.
- I will value the knowledge and wisdom of the graduates who have preceded me.
- I will recognize my weaknesses and strengths and strive to develop those qualities that will earn the respect of my patients, my colleagues, my family, and myself.
- I will respect the humanity, rights and decisions of all patients and will attend to them with compassion and without bias.
- I will maintain patient confidentiality and be tactful in my words and actions.
- I will value the diversity of patients' experiences, cultures and beliefs because it enhances my ability to care for them and enriches my education.
- I will not forget that there is an art affiliated to the field of sonography as well as a science and that warmth, sympathy and understanding are integral to patient care.
- I will strive to earn the trust my patients place in me and the respect that society places upon my profession.
- I recognize the privileges afforded me as a student-in-training and promise not to abuse them.
- As I accept these new responsibilities, I will not forget the importance of my own health and well-being. I will continue to value my relations with those who have supported me in the past and those who will share in my future.

Confidentiality/Privacy

The FERPA regulations, including recent amendments, require a school to include specific information in its annual notice (catalog). This information includes the rights of parents or eligible students: to inspect and review the student's education records; to seek amendment of the student's education records which they believe to be inaccurate, misleading or otherwise in violation of their privacy rights; to consent to disclosures of personally identifiable information contained in the student's education records (except to the extent that the law authorizes disclosure without consent) and to file complaints concerning alleged failures by the school to comply with the FERPA requirements. Further information can be found at:

<https://trocaire.edu/privacy-of-student-records/>.

Health Insurance Portability and Accountability Act (HIPAA) is a federal law established in 1996 that protects the privacy of individuals' health information. It applies to patients' medical records, healthcare information, and

healthcare providers. All Medical Imaging students are required to abide by HIPAA guidelines and do their part to protect patients' privacy. Violating HIPAA is a serious offense and is subject to the Medical Imaging Non-Compliance Form.

Academic Integrity

Trocaire College recognizes the fundamental principle of academic integrity. Honest participation in Academic endeavors fosters an environment in which optimal learning can take place and is consistent with the mission of Trocaire College. Dishonest behavior compromises the validity of Trocaire College's ethical practices, which threatens the standing of all who graduate from and/or affiliate with the college.

Trocaire College expects its student body and affiliates to understand the various forms of Academic Dishonesty, to actively avoid these behaviors, and instead choose actions that uphold Academic Integrity. Further information can be found at: <https://trocairecollege2024-2025.catalog.prod.coursedog.com/academic-policies/academic-integrity>.

Student's Own Academic Work Policy

Collaboration on course assignments is prohibited unless explicitly permitted by the instructor. When collaboration is permitted, students must acknowledge all collaboration and its extent in all submitted work. Collaboration includes the use of professional or expert editing or writing services, as well as statistical, coding, or other outside assistance.

Because it is assumed that work submitted in a course is the student's own unless otherwise permitted, students should be very clear about how they are working with others and what types of assistance, if any, they are receiving. In cases where assistance is approved, the student is expected to specify, upon submission of the assignment, the type and extent of assistance that was received and from whom.

The goal of this oversight is to preserve the status of the work as the student's own intellectual product. Students should remember that the Palisano Learning Center is available to assist them with assessing and editing their own work.

Student Success

Skills Acquisition Laboratory Offerings

Skills Acquisition Laboratory sessions allow DMS students the opportunity to take or repeat a competency as needed. These competencies are evaluated and graded by a Sonography Instructor and recorded as such. Offerings of these sessions are posted on the Sonography Laboratory door and are disclosed to students at the start of each semester.

Palisano Learning Center (PLC)

In support of the mission of Trocaire College, the Palisano Learning Center (PLC) offers the following resources free of charge to enrolled students:

- Peer and Professional Tutoring
- Online and in-person Tutoring
- Academic Coaching
- Group Study/Reviews
- Academic Success Skills Workshop

The PLC is equipped with anatomy and physiology models and health science-related resources for student use. The PLC also offers a laptop loan program for enrolled students. For further information can be found at: <https://my.trocaire.edu/academics/palisano-learning-center/>.

Tutoring Services

Free academic support is available for Trocaire courses upon request to enrolled Trocaire students. Please click on the following link for further information <https://my.trocaire.edu/request-a-tutor/>.

Time Management

Learning to manage your time is an important part of being a productive student. Effective time management

allows you to maximize study time and the work you will be required to complete more efficiently. It helps you prepare for any upcoming projects and meet deadlines on time or even early. In turn, this makes you a happier and more focused student. Please see below 4 effective ways to improve time management skills:

- Creating and maintaining schedules of upcoming tasks and events.
- Planning out your day to make sure you dedicate the right amount of time to each activity.
- Communicating with your manager or supervisor to make sure you are aware of your deadlines.
- Prioritizing high-importance tasks over low-importance ones.

Time management skills must be patiently learned and regularly practiced in order to be effective. Regardless of your current level of time management proficiency, improving your skills is a worthwhile goal for anyone looking to grow personally or professionally.

How to improve time management skills

Improving your time management skills will likely involve adopting some new habits. Here are some steps you can take to manage your time more efficiently:

- Keep a planner.
- Set a timer.
- Schedule your hours.
- Set short-term and long-term goals.
- Use your energy wisely.

Student Services

Trocaire College asserts “Student Success” as the highest-level desired outcome of the Strategic Plan. Student success not only points to desired graduation, continuing education and career acquisition goals; it also means perfecting ways we meet students’ academic, personal and professional needs throughout their education. For additional information, please click on the following: <https://trocaire.edu/student-life/student-support-services/>.

The mission of **Learning Support Services** is to provide student supports and programming from a caring, inclusive, and student-centered perspective that supports and enhance holistic learning within the tradition of the Sisters of Mercy. The division’s goal is to empower students to strive to reach their full potential in development of the whole person while supporting their academic and occupational success. Additional information can be found at <https://trocairecollege2024-2025.catalog.prod.coursedog.com/student-affairs/about-student-affairs>.

Academic Expectations

Diagnostic Medical Sonography Program Courses

For a complete listing of Diagnostic Medical Sonography courses with descriptions, please follow link below: <https://trocaire.edu/academics/academic-program/diagnostic-medical-sonography/>.

Classroom Policies:

Dress Code

During the lecture part of classes, students may wear comfortable, appropriate, and presentable clothing. It is expected that outfits will be clean and will not contain any offensive language or pictures.

Repeat Policy

Students in the DMS Program will have the opportunity to repeat any core Diagnostic Medical Sonography courses (any DMS designated course) ONE TIME. This includes failing the course (grade below a “C”) and/or exceeding the number of allowable attempts for the course (which currently resides at two – please note that withdrawals count as attempts). Students failing multiple DMS core courses during a semester (or failing a core course that they have been given the opportunity to repeat), will be dismissed from the Diagnostic Medical Sonography Program but most likely not the College (unless otherwise warranted). Example: a student can withdraw from one course and fail another and still be granted ability to continue progression in the

program one time. A subsequent failure would be dismissal from the program. If a student fails two courses, they are dismissed from the program. If a student withdraws from all courses during the semester, they will be granted the ability to continue progression in the program one time.

Student Complaint/Concerns

Any student who feels they have been aggrieved in any manner relating to admissions, academic status, financial aid, or any College level policy should refer to the College Catalog for procedures to seek remedy. <https://trocaire.edu/resolution-of-student-complaints-concerns/>.

Appeal Policy

The Diagnostic Medical Sonography Program follows the student appeal process as outlined in the College Catalog per Trocaire College Policy #663 Appeal of Academic Decisions. The complete Student Appeal process is published in the College Catalog and can be reviewed under Academic Policies at: <https://trocairecollege2024-2025.catalog.prod.coursedog.com/academic-policies/alerts>.

Clinical/Lab Policies:

Dress Code

The personal appearance of Sonography students at Trocaire College reflects both the College and Program standards. Students are expected to be professionally groomed at all times. Professional grooming includes meticulous personal hygiene and adherence to the required dress code. Further, the following will be implemented:

- 1) During clinical and lab sessions, students will be expected to dress in the scrub uniform
- 2) Mandatory black scrub uniform shirts (with Trocaire patch sewn onto the left shoulder – no tape, pins, Velcro, or glue) and black scrub pants.
- 3) Solid white, black, or gray tee shirt (long or short sleeve). No visible print.
- 4) Optional white, black, or gray warm-up or scrub jacket (with Trocaire patch sewn onto the left shoulder – no tape, pins, Velcro, or glue). Absolutely no sweatshirts.
- 5) Undergarments are to be discreet and not visible at the sleeves or hem.
- 6) White, black, or gray shoes (i.e., slip-proof Crocs, Danskos, sneakers) without open backs or toes. Slip-proof clogs with heel straps may be worn as long as the strap is utilized to secure the foot in the shoe.
- 7) Leave jewelry (necklaces, bracelets, rings) at home. Wedding bands, religious pendants, and watches (Not Smartwatch) may be worn.
- 8) Small post-style earrings may be worn in each ear. No dangling earrings or hoops. Ear gauges must be clear and no larger than a dime.
- 9) Facial piercings must be small/unnoticed and are not allowed in the surgical setting.
- 10) Post-style small nose rings are allowed unless in the surgical setting.
- 11) Be prepared to remove jewelry per individual clinical affiliates policy.
- 12) For infection control purposes, no eye-lash extensions are allowed.
- 13) Hair will be clean and neat at all times. Hair longer than shoulder length must be pulled back. While in the surgical setting, head wraps must be contained by surgical attire. Facial hair (beards, mustache, sideburns) must be neat and well-trimmed and covered while in the surgical setting.
- 14) For infection control purposes, nails must not be longer than ¼ inch above the fingertips. Artificial nails are not permitted – acrylic, gel, dipped, silk, etc. Colored nail polish is acceptable on natural nail – not chipped.
- 15) Appropriate colored make-up in a simple and professional manner is acceptable.
- 16) No strong scents (perfumes, colognes, lotions, etc.) should be applied prior to or while in the clinical setting.
- 17) Tattoos deemed offensive in nature must be covered at all times. Be prepared to cover tattoos per individual clinical affiliate policy.
- 18) Trocaire photo ID badge.
- 19) Hijab/head scarf: must be of a solid white, black, or gray color. It should be styled away from your chest so that it does not fall forward toward the patient. For Operating Room Rotations, either style your hijab so that it is not covering your neck; or wear the “beard, head/neck cover” from the

operating room. This cover will fit over your head like a hood with ties that wrap around the front to cover your hijab at your neck. If you must cover your arms with long sleeves, wear an operating room "coat/gown" over your uniform. Another option is to wear a turtleneck and style your hijab off your neck. Please be aware that protocols for covering hijabs/head scarves may vary at sites.

- 20) No student is to leave any site wearing or carrying out scrub attire owned by that facility.
- 21) Arriving at clinic without having a Trocaire photo ID badge or inadequate personal appearance will result in a Non-Compliance Form violation. The student will be dismissed from clinic for the day/or until the student is in possession of missing items. Any absence(s) incurred will be counted as unexcused, and guidelines for making up missed clinic time will be followed.

Work Policy

The clinical component of the program shall be educational in nature, and the student shall not be substituted for paid staff personnel during the clinical component of the program.

Clinical Assignments

- 1) Students will be assigned a particular Clinical Education Center (CEC) for each semester. Requests by students for specific CEC's will NOT be entertained. Assignment is solely determined by the program in a nondiscriminatory and equitable manner.
- 2) The program shall not mandate from students more than forty (40) clinical hours per week. This includes formal classes on campus and clinical assignments.
- 3) It is the responsibility of the student to provide/arrange transportation to/from clinical sites.
- 4) Scheduling accommodations are not made for work conflicts, daycare conflicts, etc. Students must make arrangements to be in attendance and on time for clinical assignments during the semester.
- 5) Students are not permitted to refuse a clinical site for attendance. The Clinical Placement Coordinator will work to ensure that students are being placed at sites that are conducive to their educational learning.

Remediation

When a DMS student exhibits difficulty in the clinical setting, the student will be referred for remediation by the assigned Clinical Preceptor. Remediation is mandatory if referred. The student is responsible for arranging an appointment with the Clinical Placement Coordinator to arrange for remediation time. If the student does not contact the Clinical Placement Coordinator within 48 hours of written referral, the student will incur a Medical Imaging Non-Compliance Form violation. Whenever possible, remediation will occur within the college laboratory. Failure to attend and participate in remediation is subject to the Medical Imaging Department Non-Compliance Form.

The remediation facilitator will document progress and performance in remediation. These progress notes may be shared with the Clinical Preceptor and Clinical Placement Coordinator in order to facilitate improvement within the clinical setting and to address behaviors/actions that led to the remediation referral. An action plan with measurable goals will be developed during the first remediation session. Failure to make satisfactory progress will result in remediation being deemed unsuccessful. Unsuccessful remediation could negatively impact the student's success in the clinical course.

Structure of Clinical Education for Diagnostic Medical Imaging Program

Clinical Education for Diagnostic Medical Sonography at Trocaire College is divided into three semesters. Each course where clinical is performed will be termed Clinical Education. The three semesters include the following:

- DMS320 Clinical Education I – Fall Semester, Year 1
- DMS420 Clinical Education II – Spring Semester, Year 1
- DMS430 Clinical Education III – Summer Session

The syllabus for each Diagnostic Medical Sonography Clinical course will include (but not be limited to) the following:

Course Description and Prerequisites Type of Supervision

Course Objectives, Student Learning Outcomes and Trocaire's Grading System Competency requirements

Clinical Education documents will include (but not be limited to) the following:

Clinical Competency Requirements Checklist for Competency Testing
Clinical Competency evaluation forms Daily log sheet
Clinical Education course evaluation – Midterm and Final Clinical Education weekly evaluation
Non-Compliance Form
Clinical orientation to policies and procedures Incident Report form

References for Clinical Education Courses

Sonography Principles and Instrumentation Examination Content Outline - The American Registry of Diagnostic Medical Sonography (ARDMS) <https://www.ardms.org/wp-content/uploads/pdf/SPI-Examination-Content-Outline.pdf>

Abdomen Sonography Examination Content Outline – The American Registry of Diagnostic Medical Sonography (ARDMS) <https://www.ardms.org/wp-content/uploads/pdf/Abdomen-Examination-Content-Outline.pdf>

Obstetrics and Gynecology Examination Content Outline – The American Registry of Diagnostic Medical Sonography (ARDMS) <https://www.ardms.org/wp-content/uploads/pdf/OBGYN-Examination-Content-Outline-FINAL.pdf>

Scope of Practice

According to the Society of Diagnostic Medical Sonography (SDMS), sets forth the standards in major areas of the diagnostic medical sonographer's responsibilities. These standards include:

- Patient information assessment and evaluation.
- Patient communication and education.
- Analysis and determination of protocol for the diagnostic examination or procedure
- Implementation of the protocol
- Evaluation of the diagnostic sonographic examination or procedure images, findings, or results
- Documentation
- Implement safety and quality improvement programs
- Quality of care
- Sonographer health and wellbeing
- Self-assessment
- Education
- Collaboration
- Ethics

A full list of the standards can be found on the SDMS website: <https://www.sdms.org/about/who-we-are/scope-of-practice>

Student/Faculty Program Expectations

Faculty members are here to assist the student in acquiring knowledge and techniques to meet our combined goals. However, it is expected that students will make the decision to learn, as well as to have a strong motivation to succeed. In order to work together successfully, students and faculty need mutual expectations.

- Students may expect the following from the faculty:
 - 1) Classroom instruction and activities designed to emphasize important information
 - 2) Faculty to function as role models and mentors
 - 3) Clinical experiences allow the application of theoretical knowledge to practice with appropriate supervision
 - 4) Assignments that are designed to meet classroom objectives and clinical competencies
 - 5) Assignments that are returned at an agreed upon time
 - 6) Classes and laboratories that begin and end on time

- 7) Office hours observed as stated
- Students are expected to:
 - 1) Be informed of and adhere to College-wide and Program specific policies and procedures
 - 2) Report to classes and laboratories on time and be prepared to learn
 - 3) Read assignments and objectives prior to classes and laboratories
 - 4) Submit assignments on time
 - 5) Report to the clinical education center on time, in proper attire according to the dress code, and be prepared to provide safe and effective care
 - 6) Treat each patient with dignity and respect
 - 7) Adhere to the clinical preceptor's directives in all aspects of patient care
 - 8) Maintain confidentiality regarding patient information, which includes strict adherence to HIPAA guidelines
 - 9) Seek appropriate guidance by contacting instructors for an appointment to be held during the instructor's scheduled office hours
 - 10) Make and keep scheduled appointments
 - 11) Complete clinical competencies within the required period of time
 - 12) Check the appropriate bulletin board(s) and Trajecsyst for current information
 - 13) Email is considered the College's official means of communication. Therefore, students are expected to check their email messages on a consistent basis. Any difficulties or issues that you may experience with Trocaire email should be immediately addressed by contacting the Trocaire IT Department at 716-827-4332.

Course and Instructional Evaluation

At the end of every semester, students are asked to constructively evaluate the instructor(s) and courses they have completed. The purpose of the evaluation is to appraise the course in an objective manner and to offer constructive suggestions. This is done online via the Trocaire website and includes a rating scale and an opportunity to write comments. Evaluation forms are reviewed by the individual faculty member and the Program Director. Students are also asked to rate clinical instructors. These evaluations are used for individual growth and improvement in teaching responsibilities, as well as overall program improvement. In addition to students, faculty members undergo annual evaluations by peers, supervisors, and themselves. The process of evaluation is intended to facilitate growth and/or modifications that would be beneficial to students and the Program. Exit interviews will be conducted independently with each graduate upon completion of the Diagnostic Medical Sonography Program. As needed, students may meet with the Program Director and/or the Medical Imaging Clinical Coordinator to determine if all student/program/college requirements have been met and further will be asked to complete an Exit Survey and share plans for their professional future. If not all student/program/college requirements have been met, arrangements will be made with the Clinical Placement Coordinator and Program Director for the student to complete all outstanding requirements, and then an exit interview will be conducted.

Academic Progression

Progression Policy

If a student is unsuccessful in any of the DMS core courses in the major sequence (grade below a "C" in any DMS designated course) or if the Objectives for Clinical Education are not met, the student cannot advance to the next level of the DMS Program. Each case will be reviewed by the Program Director and course instructor to determine eligibility for program progression. A student wishing to continue in the Diagnostic Medical Sonography program after one unsuccessful course must notify the Program Director of intent to progress within 30 days of final semester grades.

However, should a student be unsuccessful in any two or more DMS core courses (grade below a "C" in any DMS designated course), the student will be dismissed from the Program for a period of one year. After a period of one year, the student may reapply to the Program.

Failure to meet program requirements contained within this handbook will also prevent progression within the DMS Program.

Withdrawal Policy

The withdrawal policy can be found by clicking on the following link: <https://trocairecollege2024-2025.catalog.prod.coursedog.com/academic-policies/alerts>.

Services for Students with Disabilities

Please refer to the current College Catalog <https://trocairecollege2024-2025.catalog.prod.coursedog.com/student-affairs/wellness-center>.

Attendance Expectations

This policy is meant to establish an agreement between the Department of Medical Imaging and the Diagnostic Medical Sonography students regarding professional conduct, absenteeism, tardiness, as well as leaving lecture/lab/clinical early. Attendance is mandatory, with excessive unexcused absences resulting in a grade of WA (administrative withdrawal). Excused absences include only valid medical and legal obligations with proper documentation.

All medical notes and/or legal documentation must be submitted to the faculty **within 48 hours** of the date of the absence. Medical notes must indicate the student illness or injury. Regularly scheduled medical/dental appointments are not acceptable reasons for excused absences. Penalties for absence/tardiness are in accordance with the Medical Imaging Department non-compliance form.

Tardiness

Professionalism and punctuality are essential expectations in the Diagnostic Medical Sonography Program. Students are expected to arrive on time for all scheduled classes, labs, and clinical activities. Tardiness disrupts learning and reflects poor professional habits; therefore, repeated lateness will affect the course grade.

Definition of Tardiness:

A student is considered tardy if they arrive 5 minutes or more after the scheduled start of class.

Consequences for Tardiness:

- 2–3 tardies: Results in one mini-step grade decrease (Example: B+ → B)
- 4–5 tardies: Results in two mini-step grade decreases (Example: B+ → B-)
- More than 5 tardies: Results in a full letter-grade decrease AND will result in an unexcused absence (Example: B+ → C+)

Additional Notes:

- Tardiness will be tracked throughout the semester.
- Students are responsible for any material missed due to late arrival.
- Exceptions may be considered only with appropriate documentation and the instructor's discretion

Lecture/Laboratory Attendance

- 1) Trocaire College recognizes the relationship between student attendance and student retention, achievement, and success. The College is an attendance-taking institution that requires student attendance in order for students to remain enrolled in a course. Students are expected to attend, be on time for all scheduled courses (lectures, clinical experiences, and laboratories), and to attend all courses in their entirety regardless of the course modality. Instructors are required to maintain attendance records and to report absences. Attendance is considered more than logging into an online course or physically attending a seated course. Please refer to the current College Catalog for more information <https://trocairecollege2024-2025.catalog.prod.coursedog.com/academic-policies/attendance-time-on-task>.
- 2) Students are allowed to accrue **no more than 2 (two)** absences per course per semester. Any student missing more than 2 days from a lecture or lab will receive a (WA) for the course. Approval/non-approval of missed day(s) will be determined by the Program Director on an individual basis.
- 3) College Closing/Cancellation of Classes

- a. Cancellation of classes will be posted
- b. Closures will be announced via Buffalo radio and TV stations and the Trocaire Emergency Notification System
- c. Attendance will be taken at the start of each lecture and lab. Should there be an emergent reason for not being able to attend class, an email from your Trocaire account, recognized as the official means of communication, to the instructor must be made as soon as possible
 - i. A student who is absent, regardless of the reason, is responsible for all work which was due on that date, quizzes/tests administered, and information disseminated
 - ii. It is the responsibility of the student to contact the instructor for any missed work

Clinical Attendance

Clinical Attendance is critical and necessary in order for students to be successful and progress in the program. Attending the Diagnostic Medical Sonography Orientation Day is mandatory and will count as an unexcused clinical absence if not attended. Students are allowed to accrue no more than 2 (two) absences per semester. Students exceeding this will be awarded a WF grade and not be eligible to return to clinic. Missed clinical time must be made up in consultation with the Clinical Preceptor and the Clinical Placement Coordinator. Failure to attend the scheduled make up days will result in an incomplete grade until the days are made up. If after 30 days of the incomplete being issued the days are not satisfactorily completed, a grade of F will be entered for the clinical course. Exigent circumstances will be reviewed by the Program Director with the appropriate documentation.

All students will need to purchase and subscribe to the programs time and attendance system called Trajecsyst. Trajecsyst is a cloud-based system that houses and tracks clinical attendance clinical evaluations and other documents pertinent to your clinical experience.

Holidays

All holidays observed by the College will be honored for clinical and didactic education. Holidays are printed in the Trocaire College Planner and on [College Website](#). Observance of religious holidays should be brought to the attention of the Clinical Placement Coordinator and Program Director for discussion, and circumstances will be considered on an individual basis. Approved time off will be in accordance with holiday observance, and the student must contact the Clinical Placement Coordinator via email in advance of the holiday for approval of the specified date(s).

Bereavement

In the event of the death of a spouse, life partner, parent, sibling, child, mother or father-in-law, grandparent, or grandchild, a leave not to exceed three (3) consecutive days within the week of death will be granted. Any time that exceeds the 3 days must be made up. Students must be able to show proof of death in the immediate family.

Course Exams

The Diagnostic Medical Sonography Program's Exam Policy includes (but is not limited to) the following:

Unit Exams

- Examination dates will be noted on class syllabi.
- If an absence occurs on a test date, the student must present documentation within 48 hours of the scheduled class time, explaining that the absence was unavoidable. Acceptable documentation provided to the faculty member includes:
 - A medical or legal excuse on official letterhead.
 - Proof of death of an immediate family member.
 - Written request for observance of religious obligation.
 - Written notification prior to test date of extenuating circumstance.
- If proper documentation is submitted within 48 hours, the student will be afforded the opportunity to be provided with an equivalent test, project, or paper. Without proper

documentation, a permanent grade of zero will be recorded. The Program Director, in consultation with the faculty member, may make exceptions for extenuating circumstances not listed above.

- The examinations will be handed back to the students during a class period for a review of each question. Following the review, exams will be returned to the instructor and maintained in individual student files.
- If a student receives an examination grade below 75%, it is highly recommended that the student make an appointment with the professor to review the exam/grade.

Final Examinations

Final examinations in the Diagnostic Medical Sonography courses occur during the last two weeks of the College academic semester. Students are EXPECTED TO BE IN ATTENDANCE at the assigned time. Final exams will not be rearranged for any reason (i.e. vacations, weddings) except in extenuating circumstances (i.e. illness, death of immediate family member). Members of the military who must be absent at the time of a scheduled final exam due to service-related responsibilities should speak with the Program Director and the course instructor to make optional testing arrangements. Failure to take the final exam at the assigned time, except for the above extenuating circumstances, will result in a grade of zero for that exam.

*Student grades are based on criteria explained on course syllabi. At no time is extra credit given to boost grades in a course. "Rounding" of grades will not occur.

Grading Policy

At the beginning of every course, the instructor distributes a written course syllabus and a link to the program policy manual to all students taking the course. The course outline describes the objectives and content for the course and the method by which students' work will be evaluated for grades. Students should refer to this on a regular basis during the semester.

The DMS Program adheres to the grading policy of the college. Please refer to the Trocaire College Catalog for the College Grading System: <https://trocairecollege2024-2025.catalog.prod.coursedog.com/academic-policies/grading-info>.

Grading Scale

Quality Points	Letter Grade	Letter # Range
4.00/4.00	A+	97–100%
4.00/4.00	A	93–96%
3.67/4.00	A–	90–92%
3.33/4.00	B+	87–89%
3.00/4.00	B	83–86%
2.67/4.00	B–	80–82%
2.33/4.00	C+	77–79%
2.00/4.00	C	73–76%
1.67/4.00	C–	70–72%
1.33/4.00	D+	67–69%
1.00/4.00	D	63–66%
0.67/4.00	D–	60–62%
0.00/4.00	F	< 60%
0.00/4.00	WA	Withdrawal Unsatisfactory Attendance
0.00/4.00	WF	Withdrawal, Failing
0.00/4.00	W	Withdrawal (without academic penalty)
0.00/4.00	I	Incomplete
0.00/4.00	IP	In Progress
0.00/4.00	S	Satisfactory
0.00/4.00	U	Unsatisfactory
0.00/4.00	AU	Audit

0.00/4.00	Z	Academic Amnesty
-----------	---	------------------

*A student cannot progress to the next level in the DMS Program if they receive any grade below “C” in ANY of the DMS core courses/clinic/lab.

Reasonable Accommodations

Trocaire College offers students with documented disabilities reasonable accommodation and services to enable them to participate in the mainstream of the educational process fully. For further information please click on the links provided below.

- <https://trocaire.edu/student-life/student-support-services/accessibility-services/>.
- <https://trocaire.edu/student-life/wp-content/uploads/sites/3/2024/01/Accessibility-Services-Procedural-Manual-January-2024.pdf>

Title IX and Non-Discrimination

For further information with regard to Title IX and/or Non-Discrimination, please click in the following link: <https://trocaire.edu/title-ix/>

Student Policies

Student Conferences/Meetings

Students may make appointments to see faculty members during scheduled office hours or at other pre-arranged times. Office hours are posted on individual office doors, in course syllabi, and/or on Blackboard. Instructors may be contacted by leaving a message on instructors’ voice mail or by email.

Students should contact the Health Sciences and General Studies Operations Coordinator (RussoE@Trocaire.edu or 716-827-2484) to make an appointment with the Program Director.

Methods of Evaluation

Program Learning Outcomes

The Expected Program Learning Outcomes can be found on the Diagnostic Medical Sonography web page <https://trocaire.edu/academics/academic-program/diagnostic-medical-sonography/>.

Course Level Outcomes and Course Assessment

See individual course syllabi for Diagnostic Medical Sonography Course Level Outcomes and Assessment, including exam topics and dates.

Laboratory Evaluation

All clinical lab learning experiences will be evaluated weekly with the administration of required imaging competencies and assignments decided upon by the instructor(s).

Clinical Evaluation

- 1) There will be designated dates for student/instructor consultation and evaluation throughout the semester. The student is expected to demonstrate a satisfactory level of performance in the clinical setting which indicates an integration of classroom theory and technical manual skills needed in the operating room.
- 2) Agreements with clinical affiliates prohibit any compensation to student or faculty, or use of student for service while functioning as a student in the DMS Program.
- 3) Criteria for Satisfactory clinical performance is based on:
 - a. Successful completion of all clinical objectives and competencies.
 - b. Adherence to Code for Professional Conduct.
 - c. Adherence to policies of the Diagnostic Medical Sonography Program.

- d. Arrival to clinical setting/clinical site fully prepared.
- 4) Criteria for Unsatisfactory Clinical Performance is based on:
 - a. Failure to complete all clinical objectives and competencies.
 - b. Failure to comply with attendance and punctuality policies. This includes repeated failure to notify clinical instructor regarding tardiness or absenteeism on scheduled clinical day.
 - c. Failure to comply with the policies and procedures re: the DMS Program, and those enforced in the Clinical setting by the Institution.
 - d. Inability to make adult decisions and demonstrate emotional maturity.
 - e. Need for frequent and continuous direct guidance and detailed instructions to prevent mishap or error in carrying out duties of a Sonography student described in the imaging competencies.
 - f. Failure to complete and submit all written work on the assigned dates.
 - g. Failure to demonstrate safe practice in the Imaging environment.
 - h. The student's performance indicates continued lack of required preparation.
 - i. Failure to demonstrate improvement to a satisfactory level in identified areas of clinical performance commensurate with level of preparation and performance.
- 5) Eligibility to continue in the Diagnostic Medical Sonography Program will be evaluated/determined at **ALL** offence levels and will be acted upon according to the severity of the incident.

Student Files, Communicable Diseases & Medical Release

Student Files

Student files/portfolios will be kept, maintained, and tracked in Trajecsyst (online reporting and tracking system for students in health-related programs that allows for (but is not limited to) the following:

- 1) Time and Location Monitoring
- 2) Supervise and review Clinical activity logs
- 3) Create/Track/Analyze Competency Assessments
- 4) Keep Student Evaluations for future reference

Communicable Disease Policy

Trocaire College recognizes the serious implications that the spread of communicable disease, as defined by the Centers for Disease Control and Prevention (CDC), with regard to health, safety, and welfare students, faculty, staff, and general public. Therefore, the College is committed to ensuring that each employee and student be provided with a safe and healthy working/learning environment. This communicable disease policy is consistent with guidelines issued by the CDC, OSHA standards, other national/state health-related organizations' recommendations, and is compatible with the policies of all clinical affiliates. Since infectious information is prone to frequent change, the Medical Imaging Department will review this policy annually, or as necessary, as new information on infectious diseases becomes available.

Any student who knows, or has a reasonable basis for believing, that he or she is infected with a communicable disease (e.g. pandemic influenza) or other serious public health threat has an obligation to report that information to the Medical Imaging Clinical Coordinator and refer to the respiratory illness protocol on the Trocaire website at <https://trocaire.edu/respiratory-illnesses-resources/>. Any employee who knows or has a reasonable basis for believing that he or she is infected with a communicable disease (e.g. pandemic influenza) or other serious public health threat should refer to the above respiratory illness protocol. A serious public health threat is one that has been declared by the State Public Health Director or the Governor. In the event of a reported occurrence of a communicable disease on campus, the College will seek guidance and direction from the appropriate public health authorities.

Persons who are seropositive for HIV/HBV/HCV or other infectious diseases will not be excluded from admission into the Diagnostic Medical Sonography program or restricted in their access to the institution's services or facilities because of their health status. They will be provided with all reasonable accommodations unless an individualized, medically based evaluation determines that exclusion or restriction is necessary for the

welfare of the individual or other members of the institution, patients, or its affiliates (patient care community). Any student or employee who knows or has reasonable basis for believing that he or she is infected with HIV/HBV/HCV, or other infectious disease which may pose a threat to others, and whose curriculum requires performance of patient care procedures which may be exposure prone, has an obligation to share that information with the College.

If a student or patient is accidentally exposed to blood or body fluids, the person will:

- 1) Immediately report the incident to his/her instructor
- 2) Report the incident to the Medical Imaging Clinical Coordinator
- 3) Medical Imaging Clinical Coordinator completes an incident report with Security
- 4) Follow the healthcare institutions policy with regard to infection control and/or disease transmission
- 5) Obtain and submit a written physician's release to return to classes and/or clinical without restriction(s)

Medical Release Policy

- 1) A student missing (2) consecutive days of classroom/clinical/laboratory education due to medical reasons **will be required to produce medical clearance from a physician indicating there are no restrictions** for the student to return to the program.
- 2) Any student with a seizure disorder must present medical certification, from the attending physician, of being seizure free for one year and confirms that the student does not pose a risk to patients or personnel and the medical condition will not interfere with the student's duties.
- 3) Any student who has been treated, hospitalized or absent due to pregnancy, surgery, injury, serious physical and mental illness or emotional disorders must present medical documentation of:
 - a. Ability to participate with or without restriction in classroom, college laboratories and clinical areas.
- 4) Any student who, because of medical restriction that cannot be reasonably accommodated, is unable to meet program objectives and/or technical standards will be required to withdraw from the respective program due to student safety issues.
- 5) The Program Director will make the final determination as to whether a student's medical restriction can be reasonably accommodated.

Clinical Affiliate Rights

The clinical internship is a balanced model utilizing competency and performance evaluations which are designed to measure the student's cognitive skills, critical thinking and problem-solving skills, as well as the ability to present an appropriate and professional affect to patients and staff. These evaluation tools are structured to reflect an increasingly higher level of difficulty for all clinical experiences as the students move through the program.

Students accepted to the program are assigned to a clinical site affiliate by the Medical Imaging Clinical Coordinator. The Medical Imaging Clinical Coordinator makes the assignment after considering the semester that the student is currently in and after reviewing the geographic of the class as a whole.

The clinical objectives for each clinical course will determine rotation schedules within a clinical affiliate site. Further, in order to meet the educational needs of all students the clinical assignments may be changed at any time as determined by the Medical Imaging Clinical Coordinator. A student's clinical assignment(s) may be some distance from a student's home. Each student is responsible for providing his/her own transportation to and from these clinical sites.

The Diagnostic Medical Sonography program at Trocaire has clinical affiliations that cover the greater Buffalo, Niagara and Rochester areas. The Diagnostic Medical Sonography program at Trocaire College is proud to have affiliations agreements with these exceptional area hospitals that students greatly benefit from their clinical experiences.

Academic Policies

All academic policies/procedures can be found in the College Catalog and/or by clicking on the following

link: <https://trocairecollege2024-2025.catalog.prod.coursedog.com/academic-policies/about-academic-policies-procedures>.

Program Completion

Program Completion Requirements can be found in the Collage Catalog and also by clicking on the following link: <https://trocaire.edu/academics/academic-program/diagnostic-medical-sonography/>

Mercy Action Project can be found in the College Catalog and also by clicking on the following link: <https://trocaire.edu/student-life/mission-office/mercy-action-project-map/>

Graduation Requirements can be found in the Collage Catalog and also by clicking on the following link: <https://trocaire.edu/academics/academic-program/diagnostic-medical-sonography/>

Graduate Placement can be found in the College Catalog and also by clicking on the following link: <https://trocaire.edu/academics/academic-program/diagnostic-medical-sonography/>



Medical Imaging Department

Non-Compliance Form

Student Name: _____

Date: _____

Faculty Member/Clinical Preceptor: _____

Session/Course: _____

Category 1	Action to be Taken
Clinical Absence Date: _____ Student Initials: _____	1 st absence – see below 2 nd absence – see below 3 rd absence = WF (administratively withdrawn) 2 allowable sick days throughout the semester used in 8-hour increments. All used sick time must be made up during make-up week at the end of the semester.
Lecture/Lab Tardiness/Leave early (tardiness/departure in excess of 15 mins is considered an absence) Date: _____ Student Initials: _____	1 st infraction = written warning 2 nd infraction = 2 points deducted from final grade 3 rd infraction = 2 points deducted from final grade 4 th infraction = elevation to category II – 1 st infraction
Clinical Tardiness/Leave early (tardiness/departure in excess of 1 hour is considered an absence) Date: _____ Student Initials: _____	1 st infraction = written warning 2 nd infraction = 2 points deducted from final grade 3 rd infraction = 2 points deducted from final grade 4 th infraction = elevation to category II – 1 st infraction
Missed Punches on Trajecsyst Date: _____ Student Initials: _____	1 st infraction = written warning 2 nd infraction = 2 points deducted from final grade 3 rd infraction = 2 points deducted from final grade 4 th infraction = elevation to category II – 1 st infraction
Incorrect/inaccurate geolocation on Trajecsyst Date: _____ Student Initials: _____	1 st infraction = written warning 2 nd infraction = 2 points deducted from final grade 3 rd infraction = 2 points deducted from final grade 4 th infraction = elevation to category II – 1 st infraction
Inappropriate personal appearance and/or personal grooming and/or violation of Dress Code per the Program Policy and Clinical Education Manual. Date: _____ Student Initials: _____	1 st infraction = 2 points deducted from final grade 2 nd infraction = 2 points deducted from final grade 3 rd infraction = 2 points deducted from final grade 4 th infraction = elevation to category II – 1 st infraction Student may be sent home to correct appearance/grooming. Any absence or time missed will be made up.
Cell Phone Infraction – unapproved use of cell phone during clinical or class. Date: _____ Student Initials: _____	1 st infraction = 2 points deducted from final grade 2 nd infraction = 2 points deducted from final grade 3 rd infraction = 2 points deducted from final grade 4 th infraction = elevation to category II – 1 st infraction
Absence/Tardiness to any mandatory Medical Imaging Meeting Date: _____ Student Initials: _____	1 st infraction = written warning 2 nd infraction = elevation to category II – 1 st infraction 3 rd infraction = elevation to category III

✓	Category II	✓	Category III
	Action to be Taken: 1 st infraction = 5 points off final grade 2 nd infraction = 10 points off final grade 3 rd infraction = dismissal from program		Action to be Taken: Dismissal from the program and/or college – in accordance with the Program Policies and Procedures Manual and/or the Trocaire College Handbook
	Failure to notify Clinical Placement Coordinator, Clinical Preceptor and Clinical Site of an absence at least 30 minutes prior to start of clinical shift.		Dismissal from a clinical site.
	Unprofessional/disorderly/disruptive behavior Describe:		Unprofessional/unethical conduct and/or non-compliance with Code of Ethics of ARDMS or ARRT
	Leaving assigned clinical area without permission/notification		Disclosure of confidential information or HIPAA violation
	Failure to be alert/sleeping		Falsification/tampering with clinical documents
	Hindering clinical or instructor flow		Tampering with official Trocaire College documents
	Insubordination, to include, but not limited to repeated negative attitudes, actions and/or responses; refusal to perform ordered exams at expected competency levels; refusal to complete didactic and/or clinical assignments as requested and/or required		Academic Dishonesty to include, but not limited to cheating, plagiarism, furnishing false information, or concealing pertinent information to any college/clinical official or office
	Violation of safety rules/regulations on campus or at a clinical site		Causing dissension between or among other program students, program faculty, clinical officials, and/or clinical staff
	Failure to comply with supervision policy (i.e. direct or indirect supervision)		Assault, harassment, abuse or negligence with respect to any person
	Unauthorized or intentional misuse of hospital or college equipment/supplies		Theft of hospital or college property/equipment/documents
	Poor quality patient care and/or comfort, abandonment of patient		Narcotic and/or other drug infractions
	Improper exam protocol/procedure		Possession of weapon(s)
	Elevation from Category 1 - Describe:		

***Numerous infractions within the length of the program may result in dismissal from the Medical Imaging Program. (To be determined by Medical Imaging Department Faculty and Staff)**

Student: _____ Date: _____

Faculty/MICPC/Program Director: _____ Date: _____

***Student signature does not imply agreement. Notification and access to this document will be through Trajecsys.**



Diagnostic Medical Sonography Program Policy Manual

Student Acknowledgement

2025-2026

This signature validates that I have read and fully understand the Policy Manual of the Diagnostic Medical Sonography Department at Trocaire College and will abide by its guidelines (and/or modifications as warranted) for the duration of time that I am in the Diagnostic Medical Sonography Program. Additionally, I acknowledge, understand, and agree to adhere to the Technical Standards and Standards of Professional Conduct.

Student Signature: _____

Student Name (printed): _____

Date: _____

Instructor Signature: _____

Instructor Name (printed): _____

Date: _____

Student Signature Page (copy to be kept in Student Portfolio)