



Medical Imaging Department

ECHOCARDIOGRAPHY

PROGRAM POLICY MANUAL

2023-2024

*10/2017
8/2019
4/2021
7/2023*

TROCAIRE COLLEGE

DIAGNOSTIC MEDICAL SONOGRAPHY PROGRAM

INFORMATION & POLICIES GUIDE

Our primary mission as a Catholic and Mercy institution is education excellence with a commitment to teaching and service. As a new student, our program provides an inclusive environment where self-discovery and career development cultivate healthcare professionals.

As you embark on your professional journey in the Echocardiogram program, you will immerse in specialized training focused on academics, professionalism, and hands-on clinical experiences.

Program Policy Manual

Trocaire College Echocardiography Program reserves the right to change the policies in this handbook. Notice is optional for a new policy to take effect; however, the program will make reasonable attempts to notify students promptly of any policy changes through website or email postings, mail distributions, or other methods deemed appropriate by the college administration.

- ❖ All students will be bound by the policies described in the most recent edition of the Echocardiography Program Policy Manual and those described in the Trocaire College Catalog.
- ❖ Echocardiography students are bound by these additional policies that are described in this manual.
- ❖ All students engaged in school-related activities at off-campus locations are bound by the policies, agreements, or other stipulations set forth by the affiliate site.
- ❖ The Echocardiography Program and the College reserve the right to implement additional policies or to modify any of the policies stated herein if warranted and will notify students in writing through website postings, College email, or the College Moodle site.

Echocardiography Program

DIRECTORY

Linda Kerwin.....Office-Room 424, Office Number-716-827-2454
Dean of Allied Health and Professions.....KerwinL@trocaire.edu

Adrienne Earsing..... Office – Room 422, Office Number -716-827-2443
Medical Imaging Program Director.....EarsingA@trocaire.edu

Andrea Dickens.....Office – Room 423, Office Number –716-827-2494
Medical Imaging Clinical Placement Coordinator.....DickensA@trocaire.edu

Elizabeth Russo.....Office – Room 419, Office Number -716-827-2484
Operations Coordinator, Arts & Sciences and Allied Health.....RussoK@trocaire.edu

Jenna Kendzierski
Adjunct Faculty, Echocardiography Program.....KendzierskiJ@trocaire.edu

Amanda Machtel
Adjunct Faculty/Clinical Instructor, Echocardiography Program.....MachtelA@trocaire.edu

Maria Walker
Clinical Instructor.....WalkerA@trocaire.edu

Ashly Kondziela
Clinical Instructor.....KondzielaA@trocaire.edu

Table of Contents	Page Number
I. Mission, Program Learning Outcomes, and Program Assessment	5
II. Code of Ethics of the American Society of Echocardiography	6
III. Program Overview	6
IV. Course Descriptions	9
V. Student/Faculty Expectations	11
VI. Channels of Communication – Echocardiography and Student Appeal Process	12
VII. Course and Instructional Evaluation	13
VIII. Student Incidents/Injuries	14
IX. Program Policies	14
A. Health Policies	15
B. Drug and Alcohol Policy	16
C. List of Technical Standards	17
D. Pregnancy Policy	19
E. Latex Sensitivity Statement	19
F. Communicable Diseases	20
G. CPR Policy	20
H. Health Insurance Policy	20
I. Clinical Assignments	20
J. Behavioral/Dress Code for Clinical Experience	20
K. Attendance Policy	22
L. Progression in the Echocardiography Program	23
M. Disciplinary Action	24
N. Readmission Policy	24
O. College Grading Policy	25
P. Services for Students With Disabilities	25
Q. College Safety and Security	26
R. Trocaire College Diagnostic Medical Sonography Course/Classroom Policies	27
X. Medical Imaging Department Contingency Plan	32
XI. Clinical Site Affiliates	32
XII. Non-compliance Form	34
XIII. Signature Acknowledgment Page	36

TROCAIRE COLLEGE
ECHOCARDIOGRAPHY PROGRAM

I. MISSION, PROGRAM LEARNING OUTCOMES, PROGRAM ASSESSMENT

Mission Statement - Trocaire College

Trocaire College, a private career-oriented Catholic college in the spirit of the Sisters of Mercy, strives to empower students toward personal enrichment, dignity, and self-worth through education in a variety of professions and in the liberal arts. Recognizing the individual needs of a diverse student body, Trocaire College provides life learning and development within a community-based environment. Trocaire College prepares students for service in the universal community.

Mission Statement – Echocardiography Program

Grounded in Mercy and service to the community, the Echocardiography Program at Trocaire College provides students with the theoretical foundation, laboratory skills, and clinical experiences that enable them to become compassionate and competent entry-level echocardiographers. Adhering to the positive characteristics and ethics of the profession, Trocaire College students graduate with a dedication to self and others, delivering quality care to culturally diverse patients while continually striving to improve their knowledge of the field. The program embraces the mission and the operating principles of Trocaire College in presenting a comprehensive education to its students.

Program Learning Outcomes

Objective 1:

At the end of the program, the students will demonstrate entry-level clinical competence.

- The student will explain and utilize appropriate echocardiography procedures and equipment
- The student will utilize appropriate medical terminology

Objective 2:

At the end of the program, the student will demonstrate effective communication skills.

- The student will utilize appropriate oral communication skills
- The student will exhibit good written communication skills

Objective 3:

At the end of the program, the students will utilize critical thinking and problem solving skills necessary to practice within the echocardiography profession.

- The student analyze images for diagnostic quality and correct for non-diagnostic appearance
- The student will revise protocol for non-routine procedures

Objective 4:

At the end of the program, the students will demonstrate professional behavior.

- The student will practice the Code of Ethics as set forth by the ASE
- The student will understand the need for and create a professional development plan

Program Assessment Method

Assessment of program effectiveness in the program mission and the program goals will be determined by didactic, clinical, and program effectiveness goals and criteria.

II. CODE OF ETHICS OF THE AMERICAN SOCIETY OF ECHOCARDIOGRAPHY

The Echocardiography Program follows the Code of Ethics for the Profession of Diagnostic Medical Sonography. To access a full listing of the Code of Ethics, please go to the following link:

<https://www.asecho.org/asecodeofethics>

III. PROGRAM OVERVIEW

ECHOCARDIOGRAPHY CERTIFICATE

Admission Requirements

- Candidates with a 3.0 CGPA from a patient-facing Allied Health/Life Sciences program Baccalaureate or associate degree with a 3.0 CGPA from a patient facing Allied Health/Life Sciences program (i.e., Respiratory Therapy, Medical Assisting, Massage Therapy, Physical Therapy, Surgical Technology, Nursing, or Radiography)
- ***Diploma Graduates:** Transcripts will be reviewed to determine compliance with academic requirements
- Cardiopulmonary Resuscitation (CPR) through the American Heart Association is required for clinical experiences
- Updated medical records, immunizations, and a physical within one year are required prior to the start of clinical assignment

Echocardiography is a specialized concentration in ultrasound applied to heart structures. The cardiac sonographer is a skilled person qualified by academic and clinical preparation to perform echocardiography exams under the supervision of a qualified physician. The demands of the cardiac sonographer require a working knowledge of detailed anatomy and physiology of the heart and its echogenic appearance as it is presented as a 2-D image, as well as scanning techniques to obtain the optimum image.

The program of study includes thirty-six (36) credit hours of didactic, college laboratory, and clinical sessions. Clinical experiences are provided at WNY healthcare facilities. Transportation is the responsibility of the student. During the final summer semester, the final and extended clinical study period will be twelve weeks at forty hours per week. The Echocardiography program is a minimum of 1680 total hours of classes, clinic, and laboratory combined.

The graduate can sit for The American Registry for Diagnostic Medical Sonography (ARDMS) for Sonography Principles and Instrumentation (SPI) and the Adult Echocardiogram exam. The graduate also has the option to sit for the Cardiovascular Credentialing International (CCI), which combines Sonography and Principles (SPI) with Adult Echocardiogram (AE).

The general goals of the program include achieving competencies such as:

- a. Appropriate use of oral and written medical communication.
- b. Perform appropriate mathematical and algebraic functions.
- c. Provide basic and emergency patient care.
- d. Identify human anatomy (including cross-sectional anatomy) and physiology as well as pathology and disease processes that affect the anatomy.
- e. Integrate laboratory tests and other pertinent patient history to enhance sonographic findings.
- f. Describe instrumentation options and give the rationale for optimal choices for different procedures.
- g. Provide patient education related to cardiac ultrasound and promote principles of good health.

- h. Perform appropriate scanning techniques for optimal scanning.
- i. Outline the general functions of an echocardiography department, including quality control, image processing, and storage.
- j. Describe the production and interactions of ultrasound.
- k. Describe ultrasound's biological effects.
- l. Exercise discretion with professionalism and ethical behavior in communication with physicians, co-workers, patients, and the public.
- m. Identify personal goals for maintaining high standards professionally, making every effort to keep up-to-date through professional and continuing education.

CREDIT HOUR ASSIGNMENT POLICY

All semester/credit hours awarded by Trocaire will conform to the federal and state definitions. These guidelines also comply with policies set forth by the Middle States Commission on Higher Education.

Trocaire College generally follows a semester system with fall and spring semesters consisting of a minimum of 15 weeks, which includes one week for exams. Summer terms are typically less than 15 weeks but adhere to the policy in terms of meeting time and the amount of work required. Terms for specific academic programs (for example, compressed schedules) have been adjusted but, nonetheless, adhere to the policy in terms of the amount of work required.

The faculty and program administrators are responsible for developing, maintaining, and evaluating the curriculum within an academic program, although the Board of Trustees or their representative retain final control and approval of the curriculum. Assignment of credit hours for courses is determined within the program based on faculty expertise and course learning objectives. Existing courses will be evaluated for adherence to the federal credit hour regulation using an annual audit. New courses will, upon review and approval at the program level, be reviewed by the Academic Policy and Curriculum Committee (APCC) and recommended for approval or denial.

The APCC is charged with following the policy on credit hours in their review and approval of all courses and curricula and certifying that the expected student learning for the course meets the credit hour standard.

Approved courses are sent to the Registrar's Office for inclusion in the College Catalog. The Registrar's Office reviews the class schedules prior to the start of each semester to ensure that all classes are scheduled for the minimum number of minutes corresponding to the credits assigned or otherwise notes when course schedules do not match assigned credit hours. Any discrepancies are brought to the attention of the appropriate department for correction or explanation.

The following provides general guidance on how the credit hour translates to the particular instruction method. Note, however, that the credit-hour definition does not dictate specific amounts of classroom time versus out-of-class student work – the information below serves as general guidance only.

Lecture and Seminar: Courses with multiple students who meet to engage in various forms of group instruction under the direct supervision of a faculty member. The minimum contact time (that is, direct instructor-led time) per credit per week is typically one (50-minute) hour for each credit (1:1 ratio of contact time to credits per week). In addition, students are assigned two (50-minute) hours of outside work for each credit per week. Examples of the minimal amounts for each activity on a per-credit basis are displayed in the table below, using a traditional 15-week semester as the base:

Lectures and Seminars: Classroom / Faculty Instruction and Outside Student Work					
Credits awarded	Minimum contact time per week	Minimum instructional time Total for 15 Weeks (Contact time X Weeks)	Minimum Out of Class Student Work per week	Minimum Out of Class Student Work Total for 15 Weeks (Outside Work X Weeks)	Total of instructional contact time and out of class student work
1	50 contact minutes	750 contact minutes	100 minutes	1500 minutes	2250 minutes (37.5 hours)
2	100 contact minutes	1500 contact minutes	200 minutes	3000 minutes	4500 minutes (75.0 hours)
3	150 contact minutes	2250 contact minutes	300 minutes	4500 minutes	6750 minutes (112.5 hours)
4	200 contact minutes	3000 contact minutes	400 minutes	6000 minutes	9000 minutes (150 hours)

Laboratory: Courses with a focus on experiential learning under the direct supervision of a faculty member wherein the student performs substantive work in a laboratory setting. The minimum instructor contact time per credit is typically twice that of a lecture (2:1 ratio of contact time to credits, per week)

Laboratory: Classroom / Faculty Instruction and Outside Student Work					
Credits awarded	Minimum contact time per week	Minimum instructional time Total for 15 Weeks (Contact time X Weeks)	Minimum Out of Class Student Work per week	Minimum Out-of-Class Student Work Total for 15 Weeks (Outside Work X Weeks)	Total of instructional contact time and out of class student work
1	100 contact minutes	1500 contact minutes	50 minutes	750 minutes	2250 minutes (37.5 hours)
2	200 contact minutes	3000 contact minutes	100 minutes	1500 minutes	4500 minutes (75.0 hours)
3	300 contact minutes	4500 contact minutes	150 minutes	2250 minutes	6750 minutes (112.5 hours)
4	400 contact minutes	6000 contact minutes	200 minutes	3000 minutes	9000 minutes (150 hours)

Clinicals: Courses focusing on experiential learning under the direct supervision of a faculty member wherein the student performs substantive work in a clinical setting. The minimum contact time per credit is typically three times that of a lecture (3:1 ratio of contact hours to credits), depending upon the amount of outside work assigned.

Clinicals: Classroom / Faculty Instruction and Outside Student Work					
Credits awarded	Minimum contact time per week	Minimum instructional time Total for 15 Weeks (Contact time X Weeks)	Minimum Out of Class Student Work per week	Minimum Out of Class Student Work Total for 15 Weeks (Outside Work X Weeks)	Total of instructional contact time and out-of-class student work
1	150 contact minutes	2250 contact minutes	0 minutes	0 minutes	2250 minutes (37.5 hours)
2	300 contact minutes	4500 contact minutes	0 minutes	0 minutes	4500 minutes (75.0 hours)
3	450 contact minutes	6750 contact minutes	0 minutes	0 minutes	6750 minutes (112.5 hours)
4	600 contact minutes	9000 contact minutes	0 minutes	0 minutes	9000 minutes (150 hours)

IV. COURSE DESCRIPTIONS

Semester I Courses (Fall)

ECH 300 Introduction to Echocardiography (1 Credits)

This course provides the student with an overview of the field of echocardiography, medical terminology related to procedures and instrumentation, and indications for use. Areas covered will include the role of the echocardiographer, legal/ethical issues, and universal precautions. An overview of the program will be given. (Fall Semester) Open only to majors in the Echocardiography program.

ECH 301 Echocardiography I (2 Credits)

This course includes a study of examinations, techniques, measurements, equipment, and patient preparation for 2-D Imaging, M-Mode, Doppler, and Color Doppler of normal adult and pediatric hearts. Correlation with other cardiac evaluation methods will be presented, such as: angiography and cardiac catheterization, electrocardiograph, electro-physiologic studies, holter monitoring, stress testing, radionuclide studies, other topographic imaging procedures, phono-cardiography, external pulse recordings, thallium tests, and stress echocardiography. (Fall Semester) Open only to majors in the Echocardiography program.

ECH 302 Electrocardiography College Laboratory I (1 credit)

This course includes College laboratory experience on basic scanning techniques as presented in the lecture. (Fall Semester) Open only to majors in the Echocardiography program.

ECH 303 Echocardiography Principles and Instrumentation (3 credits)

A study of the principles of ultrasound instruments includes: modes of operation, operator control options, frequency selection, scanning motions and planes in a cardiac examination, patient histories and physical signs, patient preparations and, Doppler vs. Color Doppler protocols. Basic generalized pathology of the different organs will be covered. (Fall Semester) Open only to majors in the Echocardiography program.

ECH 304 Anatomy and Physiology of the Heart (3 credits)

This course provides the student with the normal anatomy of the pericardial and thoracic cavities, including the skeletal framework, the normal anatomy of the heart's large vessels, embryology development, cardiac physiology, the function of circulation, coronary circulation, parameters of arterial pressure measurement and heart pressures. Students will study the normal sonographic appearances. (Fall Semester) Open only to majors in the Echocardiography program.

ECH 320 Echocardiography Clinical Education I (3 credits)

This course concentrates on the development of initial practical skills in basic echocardiography procedures. Emphasis is on the role of the initial observer to assistant under the close supervision of faculty and sonography staff and is provided at area echocardiography clinical sites. Twenty-four hours per week. (Fall Semester) Open only to majors in the Echocardiography program.

DMS 306 Physics of Ultrasound I (2 Credits)

Fundamental principles of acoustical physics including wave propagation, acoustical impedance properties, and transducer characteristics, will be presented. Basic types of equipment and instrumentation are discussed. Doppler Principles are introduced. (Fall Semester) Open only to majors in the Diagnostic Medical Sonography program.

Semester II Courses (Spring)**ECH 401 Echocardiography II (4 Credits)**

This course will focus on the recognition and identification of cardiac pathologies with their hemodynamics in different types of heart disease. Students will learn the echographic structures. Echocardiography diagnostic procedures will be discussed such as: stress, transesophageal and intraoperative echocardiography giving indications, limitations, technical procedures and clinical pharmacology. Fetal echocardiography will be introduced. Registry style examinations will be given. (Spring Semester) Prerequisite: Grade of "C" or better in: DMS 306, ECH 300, ECH 301, ECH 302, ECH 303, ECH 304, ECH 320.

ECH 402 Echocardiography College Laboratory II (1 credit)

The student is provided with College laboratory experience on basic scanning techniques related to college lecture material. (Spring Semester) Prerequisite: Grade of "C" or better in: DMS 306, ECH 300, ECH 301, ECH 302, ECH 303, ECH 304, ECH 320.

ECH 403 Seminary/Research Course (2 Credits)

This course is designed to help the student become familiar with describing sonographic images and correlating the descriptions with clinical histories. This is accomplished with case study presentations. Student case presentations and literature reviews will be required. The student will also develop research skills by writing a paper on an approved topic. A brief presentation of their topic will complete the course. (Spring Semester) Prerequisite: Grade of "C" or better in: DMS 306, ECH 300, ECH 301, ECH 302, ECH 303, ECH 304, ECH 320.

ECH 404 Pathology of the Heart (4 credits)

This course will give the student an in-depth study of cardiac pathologies, their physiological symptoms, outcomes, and their sonographic appearance. Special attention will be given to the mitral and tricuspid valves, acquired aortic and pulmonic valvular heart disease, cardiomyopathies, coronary artery disease, pericardial disease, inflammatory, neoplastic and thrombotic disease. Other areas covered will include cardiac trauma, prosthetic heart valves and pediatric congenital heart disease. (Spring Semester) Prerequisite: Grade of “C” or better in: DMS 306, ECH 300, ECH 301, ECH 302, ECH 303, ECH 304, ECH 320.

ECH 420 Echocardiography Clinical Education II (3 credits)

This supervised off-campus experience continues to provide the student development of skills in scanning procedures. Twenty-four hours per week. (Spring Semester) Prerequisite: Grade of “C” or better in: DMS 306, ECH 300, ECH 301, ECH 302, ECH 303, ECH 304, ECH 320.

DMS 406 Physics of Ultrasound II (1 Credits)

This course focuses on practical applications of principles and concepts presented in “Physics of Ultrasound I.” In addition, the student is provided opportunities for preparation for the American Registry of Diagnostic Medical Sonographers (ARDMS) certification examination in Ultrasound Physics and Instrumentation. (Spring Semester) Prerequisite: Grade of “C” or better in: DMS 306, ECH 300, ECH 301, ECH 302, ECH 303, ECH 304, ECH 320.

DMS 419 Vascular Sonography (2 Credits)

This course introduces the student to the field of vascular sonography with the main focus on the carotid, arterial, and lower peripheral venous system. Obstetrical and Gynecological doppler applications will also be presented. (Spring Semester) Prerequisites: DMS 306, ECH 300, ECH 301, ECH 302, ECH303, ECH 304, ECH 320 with a grade of “C” or better.

Semester III, Summer – 12 week Session**ECH 430 Echocardiography Clinical Education III (6 Credits)**

In this final and extended period of clinical study, the student progresses to full independence under the supervision of faculty and sonography staff. The student will be prepared to function as a beginning Echocardiographer. This course is an extension to the learning that the student encountered during the first and second semesters. Forty hours per week for twelve weeks. (Summer Semester) Prerequisite: DMS 406, ECH 401, ECH 402, ECH 403, ECH 404, ECH 420.

V. STUDENT/FACULTY EXPECTATIONS

Faculty members are here to assist the student in acquiring knowledge and techniques to meet our combined goals. However, the students must make the decision to learn as well as to have a strong motivation to succeed. In order to work together successfully, students and faculty need mutual expectations.

Students may expect the following from the faculty

1. Lectures designed to emphasize important information.
2. Faculty to function as role models and Clinical Instructors.
3. Clinical experiences allow the application of theoretical knowledge to practice with appropriate supervision.
4. Assignments that are designed to meet classroom objectives and clinical competencies.
5. Assignments that are returned at an agreed upon time.
6. Classes and laboratories that begin and end on time.
7. Office hours observed as stated.
8. Clinical observation to include advanced imaging applications in updated modalities within the field.

Faculty Expectations from the Students

To be informed of and to adhere to Program policies and College policies and procedures as published in the Program Policy Handbook and/or Catalog. These include policies on academics, financial aid, student services, student conduct, discipline, alcohol, drugs, the health program, AIDS & HIV, sexual assaults, smoking, the release of student records, Family Rights (FERPA), cheating, plagiarism, etc.

Students are expected to:

1. Report to classes and laboratories on time and be prepared to learn.
2. Read assignments and objectives prior to classes and laboratories.
3. Submit any written assignments on time.
4. Report to the clinical education center on time, in proper attire according to Code for Professional Behavior, and be prepared to provide safe, effective, and quality care.
5. Notify the clinical site/Instructor/Coordinator of an absence prior to the start of the clinical day.
6. Treat each patient and technologist with dignity and respect.
7. Adhere to clinical instructors' directives in all aspects of patient care.
8. Maintain confidentiality regarding patient information, which includes strict adherence to HIPAA guidelines.
9. Seek appropriate guidance by contacting instructors for an appointment to be held during the instructor's scheduled office hours.
10. Make and keep scheduled appointments.
11. Complete clinical competencies within the required period of time.
12. Check the appropriate bulletin board(s) for current information.
13. NO cell phones, beepers, or text messaging during any learning activities at the College, College laboratory, or Clinical Education Centers (CEC).
14. Trocaire Email is considered the College's official means of communication; therefore, students are expected to check their Trocaire email on a consistent basis. Any difficulties or issues that you may experience with Trocaire email should be immediately addressed by contacting the Trocaire IT Department at: (716-827-4330)

Student-Faculty Appointments

Students may make appointments to see faculty members during scheduled office hours or at other pre-arranged times. Office hours will be found posted on individual office doors. Faculty may also be contacted by leaving a message via voice mail or e-mail.

When faculty and students adhere to these expectations, our combined goals will be met.

VI. CHANNELS OF COMMUNICATION – ECHOCARDIOGRAPHY PROGRAM ORGANIZATION

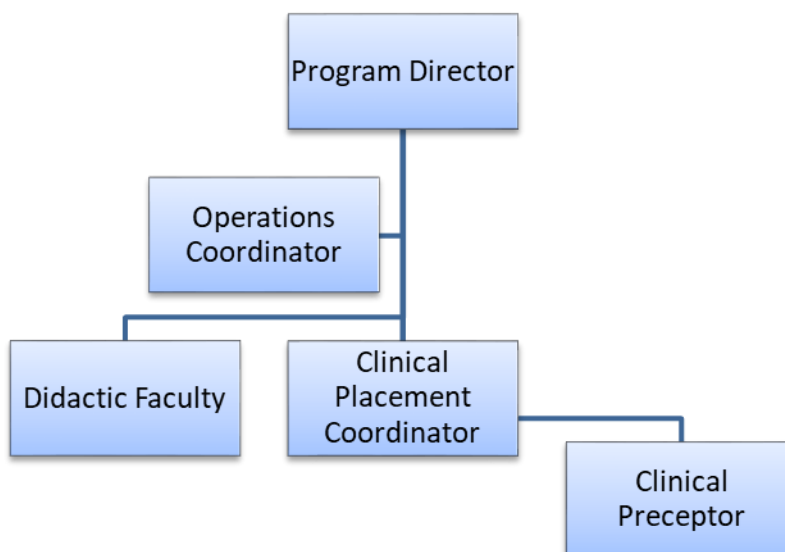
Channels of Communication

STEP I - Faculty member directly involved: (professor, advisor, adjunct, and/or clinical instructor)

STEP II – If the matter is of clinical nature – Clinical Placement Coordinator Mrs. Andrea Dickens

STEP III – Director of Medical Imaging
Mrs. Adrienne Earsing

STEP IV – Dean of Allied Health and Professions
Dr. Linda Kerwin



A. Delineation of Responsibilities

The Program Director is responsible for the management and overall success of the Diagnostic Medical Sonography Program. The duties of the program director consist of curriculum development and evaluation, student recruitment and retention efforts, program and course level outcomes assessment, and student performance and engagement assurance.

The Clinical Placement Coordinator will carry out responsibilities that ensure high-quality, well-coordinated student clinical experiences. This individual oversees all clinical operations and activities, works closely with clinical affiliates, and manages all clinical assignments.

Didactic faculty are those instructors responsible for classroom and laboratory instruction, including lectures, Moodle lessons, and hands-on instruction in the scanning lab on campus. These instructors plan, develop, and manage courses within the program under the direction of the Program Director. Faculty also act as academic advisors to students in the program.

Clinical Preceptors, also called Clinical Instructors, oversee the clinical educational experience students engage in at the clinical site. They conduct evaluations of student performance, assist students with examinations, complete procedure competencies, and generally supervise all on-site clinical activities. Clinical Preceptors maintain close communication with the Clinical Placement Coordinator.

VII. COURSE AND INSTRUCTIONAL EVALUATION

Evaluation of Echocardiography Courses - At the end of every semester, students are asked to constructively evaluate the instructor(s) and courses they have completed. The purpose of the evaluation is to rate the course in an objective manner and to offer constructive suggestions. This is done online via Trocaire website and includes a rating scale and an opportunity to write comments—the faculty and administration review evaluation forms. Students will also be asked to rate clinical instructors. Faculty members use students' evaluations for self-growth and improvement in their individual teaching responsibilities.

Exit interviews will be conducted independently with each graduate upon completion of the Echocardiography Program. Students will meet with the Medical Imaging Director and the Clinical Placement Coordinator at a pre-arranged time. At this time (if all student/program/college requirements have been met), students will be asked to complete an Exit Survey and share plans for their professional future. If all student/program/college requirements have not been met, arrangements will be made with the Clinical Placement Coordinator and Medical Imaging Director for the student to complete all outstanding requirements, and then an exit interview will be conducted by pre-arranged appointment time.

VIII. STUDENT INCIDENTS/INJURIES

A student must immediately report incidents to an instructor and the appropriate facility personnel. When an incident occurs at a clinical site (i.e. student injury or patient/client-related mishap), the appropriate facility and College forms must be completed and submitted to the Clinical Placement Coordinator (See Forms Manual). A student who sustains personal injury must report the incident to the Trocaire Wellness Office for completion of necessary paperwork. This should be done as soon as possible after the occurrence of the incident.

IX. PROGRAM POLICIES

A. Health Policies

In order to participate in the Echocardiography Program, students must be in good health, free from communicable diseases, and physically and emotionally capable of performing all of the required responsibilities of clinical experiences and meeting program objectives (See List of Technical Standards). Additionally, students must meet the health requirements of affiliated sites in accordance with clinical affiliate agreements and/or clinical affiliate policies. Students are expected to provide a safe level of patient care and must understand that the welfare of the patient supersedes the special needs of the student.

A health report consisting of a medical history, immunization records, and a physical examination is required of each student accepted to the program. The health report "shall be of sufficient scope to ensure that no person shall assume duties unless free from a health impairment which is of the potential risk to patients or personnel or which might interfere with the performance of their duties, including the habituation or addiction to depressants, stimulants, narcotics, alcohol or other drugs or substances which may alter the individual's behavior." (New York State Department of Health Code 405.3 [b] [10]). Health requirements are listed in the below table, and due date requirements will be distributed by the Program ***Students are required to submit and maintain compliance with the following: Health requirements are listed in the below table, and due date requirements will be distributed by the Program.***

<i>Health Record Requirement</i>	<i>Requirement Information</i>	<i>Compliance Time Line</i>
Physical Exam – in previous 12 months	<ul style="list-style-type: none"> • New or copy of a recent exam 	Annually
TB (PPD) skin test - in previous 12 months	<ul style="list-style-type: none"> • New test is required yearly • A recent copy from your employer is acceptable • If any previous test was positive, list test type, treatment dates and latest x-ray date/result, include copy of x-ray report 	Annually

Measles/Mumps/Rubella (MMR) - one option must be met	<ul style="list-style-type: none"> Two doses after 12 months of age OR Measles (Rubeola) two immunizations after 12 months OR blood titer documenting immunity AND Rubella (German Measles) one immunization after 12 months of age OR blood titer documenting immunity 	One time
Varicella (Chickenpox or Shingles) - one option must be met	<ul style="list-style-type: none"> Two doses of immunizations OR Blood titer documenting immunity 	One time
Hepatitis B - one option must be met	<ul style="list-style-type: none"> Vaccine – series of three and dates OR Positive Hepatitis B Antibody Test and date OR Signed OSHA declination form 	One time
Tetanus Pertussis-Diphtheria (TDAP)	<ul style="list-style-type: none"> Vaccine series as a child AND Tetanus-Diphtheria booster less than 10 years ago OR annual declination 	One time and Every 10 years/annual
Influenza (Flu shot)	<ul style="list-style-type: none"> Immunization for current flu season OR Signed declination waiver and mask compliance per site protocol 	Annually – due by 9/15 of every year
CPR/BLS for the Healthcare Provider Certification – in previous 24 months	<ul style="list-style-type: none"> American Heart Association Provider Level <i>Online only courses are not accepted!</i>	Every 2 years
HIPAA – within 12 months	<ul style="list-style-type: none"> Located on Trocaire Library Home Page 	Annually
Covid-19	<ul style="list-style-type: none"> Vaccine 	One time

Students must have submitted proper documentation of all required health information or provide a documented statement of medical/religious exemption prior to the commencement of classes, clinical, and/or continuation in the Program. Yearly health physicals, TB tests, flu vaccines, and HIPAA are required. Students not meeting these requirements will not be permitted to participate in classes, clinics, or laboratory experiences. Should a student elect not to be vaccinated against the flu, the must sign the “Declination of Influenza Vaccination for Health Care Personnel” form (See Forms Manual) and will need to wear a surgical mask at all times during clinical rotations. The student is expected to be responsible for remaining compliant with updates on all required immunizations, test results, medical clearance forms, and annual health assessments. Failure to do so will result in the suspension of clinical experiences and, in some cases, suspension from class attendance and, possibly, the Program. Be advised that Trocaire College must provide student health information to clinical agencies as required by New York State Department of Health regulations and legal contracts with affiliating agencies. Students are advised that the College and the clinical agencies associated with the Medical Imaging Programs will rely upon the health information supplied by the student. Any student who withholds or knowingly submits incorrect/inaccurate health information shall be subject to disciplinary action. (See the College Catalog)

B. Drug and Alcohol Policy

Substance abuse is a major health problem throughout the United States, and Trocaire College is committed to establishing a drug- and alcohol-free environment. Trocaire College Policy #604 addresses drug and/or alcohol use, explicitly prohibiting such use on campus or at off-campus college events. Clinical site violations are directed to the specific program for regulation. As such, the Radiologic Technology Program has implemented the following Drug Testing Policy:

- **Policy Statement:** Trocaire College Medical Imaging Department seeks to assure the physical safety of its students, employees, and those we serve. Therefore, consistent with state and federal laws, including Higher Education Assistance Act and the Drug-Free Workplace Act, and to protect the safety of all students and stakeholders, the Medical Imaging Department adopts the following policy designed to prevent the illicit use of drugs and the abuse of alcohol by students.

The Program will conduct reasonable suspicion drug and alcohol testing at the Program's expense.

- **Reasonable Suspicion Testing:** Student drug and alcohol testing will occur whenever the Program has a reasonable suspicion that a student is under the influence of alcohol, illegal drugs, or controlled substances while at clinical.

Reasonable suspicion testing must be based on specific observations concerning the appearance, behavior, or speech of a student. When an incident occurs which leads the observer to believe that drugs or alcohol may be involved, including any accident that results in or has the potential to cause injury or property damage, the suspected student's supervisor, Clinical Instructor, and Program Director must immediately be notified to review the circumstances and facts related to the incident in order to ascertain the merits of the observation and to specify further action.

If testing is required, the supervisor (Clinical Instructor) is responsible for arranging for the Student to be safely transported to and from the testing laboratory.

The Program Director will create a written record of the observations leading to a drug or alcohol test by interviewing those people who observed the incident. The written record must be completed within 24 hours of the observed behavior and subsequently submitted to the Program Director.

The Program reserves the right to determine whether reasonable suspicion exists.

Drug testing will generally be conducted by urinalysis for drugs and Breathalyzer for alcohol and will include testing for at least the following drugs: Marijuana (THC), Cocaine, Opiates, Barbiturates, Amphetamines (including Methamphetamines), and Alcohol.

The Program will engage the services of a qualified testing laboratory. The appropriate testing site may vary and will be determined when a test is required.

- **Consent, Cooperation, and Consequences:** Individuals taking a drug and/or alcohol test must sign the appropriate release to allow the laboratory to release the test results to the Program Director or their designee.
- **Disciplinary Action:** Any student who refuses to consent to drug and/or alcohol testing, tampers with a sample, tests positive, or otherwise violates this policy may be subject to the Disciplinary Procedures and Sanctions listed in the Student Handbook, including Probation, Suspension, or Dismissal.

A student who has tested positive for drug or alcohol may be subject to the Disciplinary Procedures and Sanctions listed in the Student Handbook, including Probation, Suspension, or Dismissal.

The Program retains the discretion to determine the level of discipline to be applied and whether a student should be given the opportunity to participate in rehabilitation through a drug and/or alcohol treatment program.

A student may be required to participate in follow-up care as part of a comprehensive drug and/or alcohol treatment program as a condition of continuing their education with the Program or as part of the disciplinary process. Depending on the nature of the conduct that led to the student's required participation in a drug and/or alcohol treatment program, the student may be required to submit to random drug or alcohol screenings for a specified period of time and to meet performance standards that are imposed as a condition of their continuation in the Program.

Rehabilitation: The Program attempts to provide students the opportunity to deal appropriately with drug and alcohol-related problems. Any student who voluntarily requests assistance in dealing with a drug and/or alcohol problem is encouraged to seek professional counseling for an assessment with an accredited alcohol and drug professional and, if appropriate, to enter a treatment program.

Confidentiality: All medical information, including drug or alcohol test results or treatment procedures, will be treated as confidential medical information and will be accessible only to those Program administrators and designated medical and professional persons with a specific need to know.

C. List of Technical Standards

Physical Exam/Technical Standards

Physical exams are required annually in the Diagnostic Medical Sonography (DMS) and Echocardiography (Echo) Programs. All students in the DMS and Echo Programs must possess the intellectual ability to learn, integrate, analyze, and synthesize data. They must have functional use of the senses of vision, hearing, and equilibrium. Students must have motor function capabilities to meet the demands of sonographic education and the demands of patient care.

The Echo students must possess the following:

Observation: The ability to observe is required for demonstrations and visual presentations in lectures and laboratories. The ability to discriminate among blacks, grays, and whites, and various color combinations that indicate blood flow on both display devices and recorded images, is required for scan interpretation. A student must be able to observe patients accurately and completely, both at a distance and closely.

- Have correctable near and farsighted vision in one eye to 20/20 and to 20/40 in the other eye, with visual acuity, depth perception, and ability to distinguish color gradation/shades
- Olfactory ability to detect smoke, noxious odors, and patient conditions

Communications: An echocardiographer must be able to communicate effectively via speech, reading, and writing. They should be able to hear and observe clinical staff and patients in order to elicit information, perceive nonverbal communications, describe changes in mood, activity, and posture and recognize and respond to an emergency or urgent situation. In addition to patient and clinical staff communication, the student must be able to communicate orally and in writing with physicians and other health care professionals.

Motor: Echo students should possess the ability for gross and fine motor function, manual dexterity, and physical strength to:

Apply general care and emergency treatment to patients; help lift patients who may be unable to move themselves from wheelchairs or beds to the examination table and vice-versa (up to 10 – 25 patients per day); lift and move objects; manipulate sonographic equipment computers and peripherals; adequately view sonograms, including color distinctions; work standing on their feet 80% of the time with full use of both hands, wrists, and shoulders involving the coordination of muscular movements, equilibrium and sensation.

- Fine motor skills and manual dexterity to sufficiently discern pulses and palpate veins, take a temperature, draw up medications, handle syringes and IVs, etc.
- Lift 20 pounds from the floor, carry the load for 10 feet, and place the load on a surface at a height of 36 inches from the ground
- Safely and successfully lift, move, and operate equipment used in the care of patients
- Perform basic resuscitation and emergency procedures according to **American Heart Association Basic Life Support for Health Care Providers** (CPR and AED) standards

Intellectual: Conceptual, integrative, and quantitative abilities are required. Problem-solving is a critical skill demanded of sonographers, and this requires all of these abilities. They must have the ability to exercise critical thinking and problem-solving skills, reasoning, and judgment throughout daily routines and when faced with a moral/ethical situation. The student must be able to comprehend multi-dimensional relationships of anatomic structures. Psychological stability to perform professionally and effectively under stress during traumatic situations, dealing with uncooperative/incapacitated patients, during fast-paced multi-team procedures, hectic schedules, and emergency situations, such as when a “Code” is called.

Behavioral and Social Attributes: The student must be able to use their intellectual ability and exercise good judgment to complete all responsibilities attendant to obtaining a quality ultrasound study and providing care to patients.

A student must be able to develop mature, sensitive, and effective relationships with patients and colleagues. An Echo student must be able to tolerate physical and emotional stress and continue to function effectively. A student must possess qualities of adaptability, flexibility and be able to function in the face of uncertainty.

They must have a high level of compassion for others, motivation to serve, integrity, and a consciousness of social values. A candidate must possess sufficient interpersonal skills to interact positively with people from all levels of society and at all ethnic and religious backgrounds.

If there is any reason a student cannot meet the expectations described previously, with or without reasonable accommodations, it is the responsibility of the student to notify the Medical Imaging Director and/or Clinical Placement Coordinator as soon as possible.

Any student accepted into a Medical Imaging Program at Trocaire College will be required to meet the technical criteria outlined above. If a student is unable to meet program objectives because of medical restrictions will be required to withdraw from the respective program. (See Appeals Process located in the College Catalog)

D. Pregnancy Policy

Should any student suspect pregnancy, the student is HIGHLY RECOMMENDED to meet with the Medical Imaging Director, Clinical Placement Coordinator, and Title IX Coordinator; however, DISCLOSURE IS VOLUNTARY AND DECLARATION/WITHDRAWAL OF DECLARATION MUST BE DONE IN WRITING.

Pregnant students are encouraged to meet and work with the Title IX Coordinator. Students with pregnancy-related disability, like any student with a short-term or temporary disability, are entitled to reasonable accommodations so that they will not be disadvantaged in their courses of study and may seek assistance from the Title IX Coordinator. Pregnant students may voluntarily choose to withdraw from the course or program without penalty.

In accordance with Title IX, students are also allowed time to pump breastmilk. For more information and resources for pumping breastmilk, please contact the Title IX Coordinator.

Upon declaration of pregnancy by the student, the following procedure will be followed:

The student will submit a statement from her physician verifying pregnancy and the expected due date. The statement must include the physician's recommendation as to which of the following options would be advisable. Upon declaration, the student is given the following options:

1. The student can withdraw from the program with the possibility to return to the program at a later time and begin at the start of the semester/session that was not completed.
2. Continued full-time status without restrictions in the classroom but limited duties in clinic and laboratory.
3. Continue full-time status without restrictions in clinic, classroom, and laboratory.

The physician's statement (Medical Clearance) shall be submitted to the Clinical Placement Coordinator, who discusses the situation with the Medical Imaging Director.

Additionally, a pregnant student has the right, at any time, to withdraw/revoke the declaration of pregnancy in writing.

E. Latex Sensitivity Statement

If you think you may have an allergy to latex, please see a physician who can administer a blood test to determine your sensitivity. If it is determined that you are sensitive to latex, you should notify your instructors, who can help minimize your exposure to latex products. Additionally, complete the "Latex Sensitivity" form found in the 'Forms Manual' and submit it to the Clinical Placement Coordinator.

F. Communicable Diseases

Any student who has been exposed to and/or has any communicable disease or condition must do the following:

- a. Contact the Trocaire Wellness Center to discuss the condition. (716-827-2579)
- b. Obtain a written physician's release to return to classes and/or clinical.
- c. Submit this note to the Clinical Placement Coordinator and/or the Program Director.

G. CPR Policy

CPR certification must be submitted prior to the start of clinical in the first fall semester and must be kept current for the duration of the Echocardiography Program. (Students not in compliance will not be allowed to participate in clinical experience until this requirement has been met, and the absence will be counted as unexcused).

Acceptable CPR (2-year) Certifications:

American Heart Association Health Care Provider Level

H. Health Insurance Policy

A copy of the student's health insurance card, if available, must be submitted to the Clinical Placement Coordinator prior to the start of clinical in the first fall semester and must remain current for the duration of the Program. Some clinical sites require students to be insured.

The Clinical Placement Coordinator is responsible for verifying student compliance with CPR verification and health insurance documentation.

I. Clinical Assignments

- a. The Echocardiography Program shall not mandate students more than (40) hours in one week. This includes formal classes on campus and clinical assignments.
- b. Echocardiography students will be assigned a particular Clinical Education Center (CEC) for each semester/session. Requests by students for specific CECs will NOT be entertained, and the program solely determines assignments in a nondiscriminatory and equitable manner.
- c. It is the responsibility of the student to provide/arrange transportation to/from each of the sites.
- d. Scheduling accommodations are NOT made for work conflicts, daycare conflicts, etc. Students must make arrangements to be in attendance for clinical assignments during the required times.
- e. Students are not permitted to refuse a clinical site for attendance. The Clinical Placement Coordinator will work with clinical site management to ensure that students are being placed at sites that are conducive to their educational learning.

J. Behavioral/Dress Code for Clinical Experience

1. Expected Behavior at Clinical Site: See ASE Code of Ethics at:

<https://www.asecho.org/asecodeofethics/>

2. Personal Grooming - The personal appearance and demeanor of Echocardiography students at Trocaire College reflect both the College and Program standards. Students are expected to be professionally groomed at all times. Students not in compliance with the dress code will not be permitted in the clinical area. Professional grooming includes meticulous personal hygiene.

- Hair will be clean and neat at all times
- Hair longer than shoulder length must be tied back
- Hair pulled to the back of the head at ear level or lower than ear level is professional in appearance

- Shambolic buns or hair piled on top of the head is discouraged
- Hair must not be dyed in unnatural colors (i.e., purple, green, blue, fire engine red, orange, pink, etc.).
- Head coverings must not be loosely wrapped around the neck.
- Appropriate colored make-up, applied for day time, and worn in a simple and professional manner, is acceptable
- Artificial nails are not permitted- Dipped nails are acrylic and not permitted
- Nails must be no longer than ¼ inch above the fingertips
- Colored polish is acceptable – Not chipped
- All tattoos must be covered per the clinical affiliate policy
- Facial hair (beards, mustaches, and sideburns) must be neat and well-trimmed
- No perfumes, colognes, scented hair gels, or fragrant lotions should be applied prior to or during clinical
- Eyelash extensions may be no longer than a half inch
- Leave jewelry (necklaces, bracelets, and rings) at home. A wedding band/wedding set and a watch (analog or digital only, no smart watches – i.e., Apple Watch, etc.) may be worn
- Post-style small earrings may be worn in each ear – no dangling earrings or ornaments larger than a dime, clear gauges only
 - Be prepared to remove jewelry per clinical affiliates
- Post-style tiny nose ring is allowed
 - Be prepared to remove jewelry per clinical affiliates
- Facial or body piercings should be unnoticeable
 - Be prepared to remove jewelry per clinical affiliates

Required Clinical Dress Code

The clinical dress code policy is as follows:

- All clinical attire must be cleaned, pressed, appropriate, and professional
- Mandatory black scrub uniform shirts (with Trocaire patch professionally sewn onto the left shoulder – no tape, pins, velcro, or glue) and black pants
- Clean solid white, black, or gray tee shirt: long or short-sleeved (no printing visible)
- Optional white, black, or gray warm-up jacket with a Trocaire patch professionally sewn (no tape, pins, velcro, or glue) on the left shoulder. Warm-up jackets not meeting these guidelines are not allowed
- Undergarments are to be unobtrusive and not visible at the sleeves or hem
- White, black, or gray socks must be worn and be high enough to cover above the ankle area
- White, black, or gray professional shoes (i.e., slip-proof Crocs, Danskos, sneakers) without open backs, toes, or arch area perforations are acceptable. Clogs with heel straps may be worn as long as the strap is utilized to secure the foot in the shoe
- Pen and pocket notebook
- Trocaire photo ID badge
- Hijab/head scarf: must be of a solid white, black, or gray color. It should be styled away from your chest so that it does not fall forward to your patient. If you must cover your arms with long sleeves, wear an operating room “coat/gown” over your uniform. Another option is to wear a turtle neck and style your hijab off your neck. Please be aware that protocols for covering hijabs/head scarfs may vary at sites if entering sterile areas
- No student is to leave any site wearing or carrying out scrub attire which the facility owns

K. Attendance Policy

Attendance affects the quality of academic performance. Therefore, prompt and regular attendance in lectures and laboratory sessions, as well as in the clinical education centers, is expected of all students.

a. Academic Attendance

1. See the current College Catalog for Class/Academic Attendance Policies.
2. Each Echocardiography course may have specific attendance policies.
Read each syllabus carefully for details.
3. College Closing/Cancellation of Classes - Cancellation of classes will be posted.
Closures for inclement weather will be announced over all major Buffalo radio and TV stations (e.g. WBEN, WGR, etc.), and the Trocaire Emergency Notification System.

b. Clinical Attendance

1. Starting times may vary as per clinic site/adjunct faculty. Students requiring special arrangements will be reviewed on an individual basis.

c. Clinical Absenteeism Policy

In case(s) of absence(s) from the clinical site, it is the student's responsibility to:

1. Call the clinical affiliate at least 30 minutes prior to site start and ask to speak with or leave a message for the assigned faculty, instructor, and/or Echocardiography Supervisor. Text messages will not be accepted as official notification.
2. Call and send an email from your Trocaire account as means of official communication to the Clinical Placement Coordinator and Clinical Instructor at Trocaire.
3. Absences per given course are to be made up according to the clinical time Makeup policy (for additional information, refer to the section "Clinical Makeup Policy").

All medical notes and/or legal documentation must be submitted to the Adjunct Faculty **within 48 hours** from the date of the absence. Medical notes must indicate student's illness or injury. Regularly scheduled medical/dental appointments are not acceptable reasons for excused absences.

Utilizing Trajecsys to Clock In/Clock Out for Clinic

Each student must clock in and out using the Trajecsys system. Additionally, the student must use Geolocation to clock in and out so that program faculty may verify location for liability purposes.

- Attendance without a completed record does not exist. Students will not receive credit for clinical hours that are not properly recorded (both clocking in and clocking out) within Trajecsys with Geo location. For instance, if you forget to clock in as you arrive at clinic or forget to clock out when you leave clinic, or you do not use Geolocation, the clinical time worked is void. The clinical day is considered an unexcused absence, and the student will have to make up an entire day of clinic.

Clinical Make Up Policy

Should a student require clinical make up hours, the student is responsible for scheduling the time with the adjunct faculty or clinical instructor of the echocardiography department at the clinical education center where the absence took place. Written permission must be obtained from the adjunct faculty or clinical instructor in order to verify permission, and this must be submitted to the Clinical Placement Coordinator for approval (See Make up Verification Form in the Forms Section). Make up must be completed at the specific clinical site where the student was scheduled when the absence(s) occurred. No clinical make up hours will be scheduled during times when the College is officially closed, nor will they be scheduled during weekends, holidays, or evening hours.

1. Fall & Spring Semesters:

Make up dates are to be scheduled and approved by the Clinical Placement Coordinator as soon as possible following the day that the absence has occurred and must be completed no later than the final week of the semester. Failure to do so will result in a WA grade for the course. Extenuating circumstances will be reviewed on an individual basis.

2. Summer Clinical Component:

Make up dates must be completed immediately following the last scheduled clinic day of the session. All other rules for making up clinical time remain the same. Extenuating circumstances will be reviewed on an individual basis.

Holidays

All holidays observed by the College will be honored for clinical and didactic education. Holidays are printed in the Trocaire College Student Handbook and Planner (distributed to all students, faculty, and staff annually). Observance of religious holidays should be brought to the attention of the Clinical Placement Coordinator and Medical Imaging Director for discussion, and circumstances will be considered on an individual basis. Approved time off will be in accordance with holiday observance, and the student must contact the Clinical Placement Coordinator via email in advance of the holiday for approval of the specified date(s).

Bereavement Policy

In the event of the death of a spouse, life partner, parent, sibling, child, mother or father-in-law, grandparent, or grandchild, a leave not to exceed three (3) consecutive days within the week of death will be granted. Any time that exceeds the 3 days must be made up. Students must be able to show proof of death in the immediate family.

Clinical & Skills Assessment Remediation

When an Echocardiography student exhibits difficulty(ies) in clinical psychomotor skills/performance and/or skills performance in the Clinical Skills lab, remediation is mandatory. The adjunct faculty member(s) and/or clinical instructor will submit the recommendation for remediation. **The student is responsible for arranging an appointment with the Clinical Placement Coordinator to arrange for remediation time. If the student does not contact the Clinical Placement Coordinator within 48 hours of a written recommendation from the faculty/clinical instructor, the student will incur a Non-Compliance violation.**

Whenever possible, remediation will occur within the College laboratory. The clinical and skills assessment remediation form will be filled out in Trajecsyst with a detailing of both the stated objective(s)/skills and an area to document student progress. Failure to follow this procedure will be documented and utilized in conjunction with the student's clinical evaluation(s). (See Remediation form in Forms Manual)

L. Progression In The Echocardiography Program

If a student is unsuccessful in any one of the ECH (and/or DMS 306/DMS 406) courses (grade below "C" in any ECH (and/or DMS 306/DMS 406) course) or if the Objectives for clinical education are not met, the student cannot advance to the next level of the Echocardiography Program. Each case will be reviewed by the Medical Imaging Director and course instructor to determine eligibility for readmission. However, should a student be unsuccessful in any two or more ECH (and/or DMS 306/DMS 406) courses, the student will not be recommended for readmission to the Program. Failure to meet program requirements contained within this Program Policy Manual (pertaining to specific, general, didactic, and/or clinical requirements) will also prevent progression within the Echocardiography Program.

M. Disciplinary Action

Disciplinary action will be initiated if an Echocardiography student fails to follow program policy guidelines and/or meet program requirements. This will include the use of the Non-Compliance Form with consequences potentially leading to Program dismissal should infractions not be rectified accordingly. Students are also expected to follow the Trocaire College Catalog. Consequences may include probationary measures, grade adjustments, or dismissal. See the Non-Compliance form in the "Forms Manual."

N. Readmission Policy

1. If an Echocardiography student fails to achieve a grade of "C" or better in any ECH (and/or DMS 306/DMS 406) course/clinical/labs, the Echocardiography Faculty will review the following criteria to determine if a student is eligible for readmission. If a student is not successful in one ECH (and/or DMS 306/DMS 406) course/clinical/lab, they are eligible for re-admission. If they are not successful in two or more ECH (and/or DMS 306/DMS 406) courses/clinical/lab, they are not eligible for readmission to the Echocardiography Program.
 - a. Academic Performance:
 1. Examinations, quiz grades, homework, and course performance
 2. Attendance
 3. Professionalism/Behavior/Attitude
 - b. Clinical Performance:
 1. Clinical Evaluations
 2. Clinical Anecdotal Records
 3. Clinical Adjunct Faculty Recommendations
 4. Attendance
 5. Mastery Level Competency Sheet
 6. Professionalism/Behavior/Attitude
 - c. Echocardiography Advisor's recommendation
 - d. Achievement in other required programs and core courses
 - e. Adherence to the ASE Code for Code of Ethics
 - f. Program space availability for class/clinic/laboratory
2. The Medical Imaging Director will then notify the student if deemed eligible for readmission to the Echocardiography Program.
3. Readmission is contingent upon the following:
 - a. Completed Request for Readmission forms submitted to the Medical Imaging Director requesting readmission. (See Forms Manual)
 - b. Successful completion of Echocardiography Program Readmission criteria- which would include the following:
 1. Meet with both the Medical Imaging Director and the Clinical Placement Coordinator.

2. Review of assigned media and completion of a one-page summary of any two.
3. Successful completion of selected laboratory competencies OR auditing the last clinical course the student completed and demonstrate competency by successfully completing the clinical course requirements.
4. Setting a meeting schedule with the Medical Imaging Director for the semester that the student is repeating a course to discuss the progress and/or any struggles that the student is encountering.

The timeline for readmission and due dates of the above items will be discussed and set with the student during the meeting with the Medical Imaging Director and Clinical Placement Coordinator. Students failing to complete all of the above requirements will be denied readmission to the program. A student denied readmission has the right to appeal the decision. A student who desires an appeal should contact the Medical Imaging Director. A student is allowed readmission into the Echocardiography Program only once.

O. College Grading Policy

The Echocardiography Program Grading Policy mirrors Trocaire's Grading Policy.

Quality Points	Letter Grade	Letter # Range
4.00/4.00	A+	97–100%
4.00/4.00	A	93–96%
3.67/4.00	A–	90–92%
3.33/4.00	B+	87–89%
3.00/4.00	B	83–86%
2.67/4.00	B–	80–82%
2.33/4.00	C+	77–79%
2.00/4.00	C	73–76%
1.67/4.00	C–	70–72%
1.33/4.00	D+	67–69%
1.00/4.00	D	63–66%
0.67/4.00	D–	60–62%
0.00/4.00	F	< 60%
0.00/4.00	WA	Withdrawal Unsatisfactory Attendance
0.00/4.00	W	Withdrawal (without academic penalty)
0.00/4.00	I	Incomplete
0.00/4.00	IP	In Progress
0.00/4.00	S	Satisfactory
0.00/4.00	U	Unsatisfactory
0.00/4.00	AU	Audit
0.00/4.00	Z	Academic Amnesty

****A student cannot progress to the next level in the Echocardiography Program if they receive any grade below “C” in ANY of the Echocardiography core courses/clinic/lab, as well as DMS 306 and/or DMS 406.***

P. Services for Students with Disabilities

Trocaire College offers students with disabilities reasonable academic accommodations and services to enable them to fully participate in the mainstream of the educational process. In compliance with Section 504 of the Rehabilitation Act of 1973 and the Americans with Disabilities Act of 1990 and the Amendment Act

of 2008, the College provides services on an individual basis for students with disabilities. Students are required to provide documentation to indicate the need for services.

Students are encouraged to contact the Coordinator of Disabilities (716-827-2412) at the time of admission to the College. Services or academic accommodations will be based on individual needs and course requirements. They include but are not limited to an extension of time for testing, tutoring, note-taking, readers and writers for examinations, iPads for recording, reading material and lectures, learning materials in a special format, and assistive technology.

Responsibilities

Every student has a responsibility to provide documentation from a qualified licensed professional of their disability prior to accommodations.

Every student has a responsibility to follow recommendations and established procedures for academic support.

General Guidelines for Documentation

1. Student must make an appointment with the Coordinator of Disability Services.
2. The Coordinator of Disability Services will conduct an initial intake interview. In this interview, the student will be expected to identify themselves as having a disability and will be asked to provide documentation that includes a diagnosis or an assessment of a disability.
3. If the student has:
 1. No prior documented disability, then the student will be referred for appropriate evaluation.
 2. A prior documented disability, the student will be granted provisional accommodations for 30 calendar days until up-to-date documentation is provided. Failure to adhere to the above stated timeframe will result in the suspension of accommodations until the documentation is delivered.
4. After proper documentation has been submitted, please allow at least (5) business days before accommodations are granted.
5. A letter will be given to a student's instructors informing them of the accommodations.
6. Students must sign up for the PCAS at least three (3) days before the test/exam/quiz is to take place. Accommodations will not be granted without the appointment.
7. Students must meet with the Coordinator of Disability Services at the start of each semester to review/update accommodations. In determining the acceptability of documentation, Trocaire College follows "Best Practices: Disability Documentation to Higher Education," including the "Seven Essential Elements of Quality Disability Documentation." See the website at www.trocaire.edu

Confidentiality

Information regarding a student's disability is considered confidential and will be shared only with those at Trocaire College who need to know. That includes administrators, faculty, and staff who have access to disability relation information only in so far as it affects their functioning in their respective areas of responsibilities.

Q. College Safety and Security

Campus Safety and Security at Trocaire College works in conjunction with students, faculty, and staff to ensure their security throughout the campus. Trocaire employs uniformed guards through a private security service. The guards work closely with the Buffalo Police Department.

In order to support emergency services on and around the Trocaire campus, we rely upon a strong working relationship with not only the Buffalo City Police Department but also the Buffalo Fire Department. We also call on the services provided by local first responders.

In keeping with the Cleary Act, we provide vital information and statistics about incidents on and around the campus community in an annual security report published on the Department of Education website.

We believe in a well-informed community; in keeping with this, notices of pertinent security related happenings and incidents are posted on security boards throughout campus.

For additional information, contact the Director of Facilities, Choate Campus Room 337.

1. Crime Prevention

The key to a safe and secure environment in any area is crime prevention. Campus Safety and Security utilizes uniformed guards in most cases when classes are in session. The college also utilizes security cameras which are installed in several areas on campus. Crime prevention is a joint effort, however, and cannot be accomplished without the assistance of the entire Trocaire community of students, faculty, and staff. The security committee has composed a list of several crime prevention and safety tips, which are distributed at the beginning of each semester.

In addition to uniformed security officers, there is a campus-wide Security Advisory Committee comprised of faculty, staff, administration, and students.

2. Campus Safety and Security Phone Numbers

716-827-2500: Main Desk Choate Campus

716-445-2104: Emergency – Choate Campus Only after 6:30 p.m. (use an outside line)

3. Fire Safety

If the alarm sounds, all occupants of the building must vacate immediately. Close office and classroom doors. Should an alarm sound while an exam is being taken, hand exams and answer sheets to the instructor as you exit the room unless your safety is otherwise jeopardized.

**Revised
08/2023.**

R. Trocaire College Echocardiography Course/Classroom Policies **Testing Policy**

1. Examination dates will be noted on class syllabi.
2. If an absence occurs on a test date, the student must present documentation before or on the next scheduled meeting day for that class, explaining that the absence was unavoidable. Acceptable documentation provided to the respective faculty member includes:
 - A medical or legal excuse on official letterhead proof of death of an immediate family member
 - Written request for observance of religious obligation
 - Written notification prior to test date of extenuating personal circumstance

If proper documentation is submitted, the student will be afforded the opportunity to be provided with an equivalent test, project, paper, or alternate makeup exam.

Without proper documentation, a permanent grade of zero (0) will be recorded for missed assignments, tests, etc. The Medical Imaging Director, in consultation with the faculty member, may make exceptions for extenuating circumstances affecting the student not listed above.

1. Examination grades will be determined from computer answer sheets only. This will be the only indicator of the student's grade. There are no exceptions.
2. Computer answer sheets will not be handed back to the student. If the student wants to review their answer sheet, it is the individual's responsibility to arrange an appointment with the instructor.
3. The examinations will be handed back to the students during a class period for a review of each question. Following the review, exams will be returned to the instructor and maintained in individual student files.
4. If a student receives an examination grade below 75%, it is highly recommended that the student make an appointment with the professor to review the exam/grade.

Final Examinations

1. Final examinations in the Echocardiography courses occur during the last two (2) weeks of the college academic semesters. Students are **EXPECTED TO BE IN ATTENDANCE** at the assigned time. Final exams will not be re-arranged for any reason (i.e., vacations, weddings) except in extenuating circumstances (i.e., illness, death of immediate family member). Members of the military who must be absent at the time of a scheduled final exam due to service related responsibilities should speak with the Medical Imaging Director and the course instructor to make optional testing arrangements. Failure to take the final exam at the assigned time will result in a grade of zero (0) for that exam.
2. Students are required to be present and/or available on the Tuesday and Thursday of the last week of the semester, in addition to being available until and including the last scheduled day of the semester.

Extra Credit

Student grades are based on criteria explained in the course syllabi. At no time is extra credit given to boost grades in a course.

Academic Dishonesty

Academic endeavors demand personal honesty from all participants in order to foster an environment in which optimal learning can take place. Academic integrity is consistent with Trocaire's mission and culture.

Definitions

Academic dishonesty may be defined as:

- A. Cheating – giving or receiving answers on required/evaluative material, using materials or aids forbidden by the instructor, alteration of academic records, unauthorized possession of examination, or the falsification of admissions, registration, or other related college materials.

- B. Plagiarism – the offering of someone else’s work as one’s own, using material from another source without acknowledgment, including the reprinting and/or importing in whole or in part term papers found on internet sites without acknowledgment.
- C. Interference – interfering with the work of another student by either obtaining, changing, or destroying the work of another student.
- D. Buying or selling term papers, homework, examinations, laboratory assignments, and computer programs/assignments.
- E. Falsifying of one’s own or another’s records.
- F. Knowingly assisting someone who engages in items A-E above.

Penalties

Penalties that may be imposed include, but are not limited to, the following:

- A. Faculty may impose the following penalties within the context of a course,
 - 1. Lowering of a grade or failure for a particular assignment.
 - 2. Lowering a grade, failure, and/or dismissal from the course.
- B. The Medical Imaging Director responsible for the student’s curriculum may impose harsher measures within the context of the College, such as,
 - 1. Disciplinary probation – may include a mandatory repeat of a course, etc.
 - 2. Dismissal from the program.
- C. The Medical Imaging Director may recommend to the Vice President for Academic Affairs that the student be suspended/dismissed from the College.
- D. The Vice President for Academic Affairs may suspend the student from the College for a period of one semester or more. When deemed appropriate, the student may be dismissed from the College.

Classroom Policy During Test Taking

- All personal belongings are required to be placed in the front of the room or on the windowsill ledge
- This is to include, but is not limited to: books, papers, backpacks, book bags, purses, cell phones, and pagers. No smart watches (i.e., Apple Watch, etc.) are permitted to be worn during testing
- Cell phones are to be turned off, including vibration mode. Cell phones are not to be used as calculators. No earpieces are to be used
- Hair should be styled away from the face. No hats or hoods are to be worn during testing. Shoes must remain on at all times during testing
- No food or beverages are allowed during testing
- Students are not allowed to ask questions of any kind during tests, quizzes, and/or exams unless verifying a typographical error

Attendance Policy

ATTENDANCE IS MANDATORY.

As taken from the Trocaire College Catalog: “Students are expected to attend all regularly scheduled classes. Each instructor will determine the requirements for attendance within specific courses.”

Any student having absences greater than what is allowed (as noted in the course syllabus) will see a lowering of the final grade or result in a failure due to absence. Specifics for individual courses are

stated in the course syllabus.

Attendance will be taken at the start of each class. Should there be an emergent reason for not being able to attend class, a phone call to the instructor must be made at least 30 minutes prior to the scheduled start time of that particular class. Text messages are not acceptable means of communicating your absence. A student who is absent from a class is held responsible for all work that was due on that date, quizzes and tests which were performed on that date, information provided during class, and work assigned on that date. Please make an effort to have a classmate provide you with updates from the time you have missed and realize that work handed in late can and may have points deducted should you not follow the proper policy.

Tardiness Policy

Classes begin promptly. Tardiness will not be tolerated; it is very disruptive to classmates as well as instructors. If you are going to be tardy, an email or phone call must be placed to the instructor at least 15 minutes prior to the scheduled start time of the class. Text messages will not be accepted as official notification. If you are not present when attendance is taken at the start of class or if you have not called to leave a message saying you are going to be late, then you will be considered tardy.

Tardiness will result in a lowering of your final grade. Excessive tardiness can result in a grade of “WA” for the course, and your course syllabi should be consulted.

Late 2 times = 3 point grade drop	Ex: (B+) to (B)
Late 3 times = 6 point grade drop	Ex: (B+) to (B) to (B-)
More than 3 times = 10 point grade drop	Ex: (B+) to (C+)

Dress Code for Class and Laboratory

During the lecture part of classes, students may wear comfortable, appropriate, and presentable clothing. It is expected that outfits will be clean and will not contain any offensive language or pictures. “Tube tops,” “halter tops,” deep-set necklines, and very short, tight skirts and shorts should not be worn to class. Shirts and blouses must extend to the waistband. Underwear should not be visible above pants that are riding below the hip line. Sunglasses and hats are not to be worn in the classroom.

During lab sessions, students will be expected to dress in their scrub uniforms. This creates an atmosphere of professionalism and prepares the student for active participation in simulating echocardiography procedures.

Social Media Policies

The student will respect the policies of confidentiality related to social media. Any statements, pictures, or expressions that could cause harm or injury to an individual or to the school will be considered grounds for dismissal from the program. Recording of the class is prohibited without prior approval. This includes tape recordings, video recordings, mobile/cell phone recordings, etc. Under no circumstance may any item be posted to online services such as YouTube or Facebook, etc.

Fraternizing While in a College/Clinical Environment

You are entering a field that requires you to conduct yourself professionally both at the College and your clinical site. Your role is a student, and you must conduct yourself accordingly. Fraternization with the faculty, clinical instructors, technologists, or members of the Echocardiography Program is strictly prohibited while enrolled in the program. This includes but is not limited to personal phone calls, texting, going out to eat/drink, “hanging out” after clinical hours, dating, or communicating/friending them on social

media networks. The faculty, clinical instructors, clinical facilities staff, and the Echocardiography Program members are your professional leaders, not your personal friends. Please remember your role as a student and treat the faculty, clinical instructors, technologists, and members of the Echocardiography Program with respect. These individuals are here to be your instructors and professional mentors in the field, and in order to have fairness and equity for all students, they must be treated professionally.

Personal Electronic Equipment

Students are prohibited from using personal electronic devices (i.e., cell phones, smart watches, or wireless devices) in verbal or text mode for personal use during classroom, laboratory, or clinical. The only acceptable use of such devices is if a student intends to access an application/website to improve patient care, but only after securing permission from the faculty member or clinical instructor. Students are permitted to access electronic devices only for documenting time and completing electronic paperwork. Bluetooth devices are prohibited in the classroom, laboratory, or clinical areas at all times. Any use of electronic devices for personal reasons during classroom, laboratory, or clinical areas is a breach of standards of professionalism and may result in the termination of the student's classroom, laboratory, or clinical learning experience.

Personal cell phones and/or pagers may not be worn on the student's person during scheduled clinic hours. Phones may only be used for necessary personal business with the permission of the faculty and clinical instructors only.

Complaint/Grievance Policy

Department/Program Level Complaint Policy:

Any student who feels they have been aggrieved in any manner relating to admissions, academic status, financial aid, or any College level policy should refer to the College Catalog for procedures to seek remedy.

Any student who feels they have received an erroneous grade or evaluation or has been subjected to a violation or inequitable application of the program policies should pursue the following procedure:

1. If the nature of the complaint involves an individual course or faculty/staff member, the student should first seek an immediate resolution through a discussion with the faculty/staff directly involved in the incident. If the nature of the complaint involves the clinical setting, the student should contact their clinical preceptor and the Clinical Placement Coordinator to discuss the situation and work to resolve the matter.
 - a. Any corroborating documentation should be provided at this time, whether in the form of medical evidence or physician's documentation, communication between student and faculty/staff, or other supporting data.
2. If the student feels the matter has not been satisfactorily remedied through the actions listed above, the student should request through official means of communication, consideration by the Program Director. An appointment to meet with the Program Director will be scheduled no more than five business days from the request. During this time, the Program Director will consult with the faculty/staff involved to obtain background information about the situation.
3. If no resolution is reached at the Program Director level, the matter will be brought to the Dean of Allied Health and Professions.

Note: A student may be removed from the clinical site for reasons related to the student's physical or emotional safety and well-being and/or for reasons relating to unprofessional conduct, safety, and/or the

well-being of patients, students, faculty, or hospital property.

The Echocardiography Program follows the student appeal process as outlined in the College Catalog. The complete Student Appeal process is published in the College Catalog and is available for review at www.trocaire.edu

X. Medical Imaging Department Contingency Plan Policy

In the event of a catastrophic event that prohibits the normal operation of college business, the Echocardiography program will follow the protocol outlined below unless superseded by Trocaire College contingency plan/policy:

Communication: The Program Director will send an email to all students and faculty/staff identifying the nature of the event and instructions for conducting business within reasonable accommodations.

Instruction: If physical presence on campus is not allowable due to health or safety concerns, instruction will be conducted online until a time when a return to campus is possible.

Lab: If permitted by circumstances, students will be allowed on campus for labs in reduced numbers. If conditions bar on-campus labs, alternate solutions will be sought out by the Program Director based on the length of time such activities are not allowed. These could include, but may not be limited to: extension of program, simulation programs, make up time once a return is possible.

Clinical: Whenever possible, all efforts will be made to continue to allow students to attend clinical rotations. However, if students are unable to participate in clinical education, alternate solutions will be sought out by the Program Director based on the length of time such activities are not allowed. These could include, but may not be limited to, the extension of the program, simulation programs, and make up time once a return is possible. Critical support services: Faculty and staff will be available to the student via college email to address any questions or concerns and to facilitate the continuation of the educational experience. College wide support services will be prescribed by the College.

Timeframe: The length of time for which these protocols are implemented will be determined by the nature of the event, the College, and possibly external entities. The Program will make all attempts to return to normal operating practice as soon as possible, keeping in mind the safety of the students and the community.

A Catastrophic event is defined as any event that could affect student learning and program operations and will be determined by the College, State, or Federal Government.

XI. CLINICAL SITE AFFILIATIONS

ECHOCARDIOGRAPHY PROGRAM CLINICAL SITE AFFILIATIONS
FACILITY NAME
Buffalo General Medical Center
Buffalo Medical Group
Erie County Medical Center
Great Lakes Cardiovascular
Highland Hospital (Rochester)
Kenmore Mercy Hospital

Medical Associates – UPMC Erie/GLPP/WCA
Mercy Hospital
Niagara Falls Memorial
Northtowns Cardiology
Oishei Children's Hospital
Olean General Hospital
Pediatric Cardiology Associates
Rochester General Hospital
Sisters Hospital
St. Joseph's Hospital
Suburban Cardiology
TLC Health Network (Lakeshore/Gowanda)
Trinity Cardiology
United Memorial Medical Center (Batavia)
Unity Health System at Park Ridge Hospital (Rochester)
University Cardiovascular Associates (Rochester)
UPMC Chautauqua (WCA Hospital Jamestown)
Veteran's Hospital
Wyoming County Community Hospital (Warsaw)



Medical Imaging Department Non-Compliance Form

Student Name _____
Clinical Site/Preceptor: _____

Date: _____
Session/Course: _____

Category 1	Action to be Taken
<p>Clinical or Class Absence</p> <p>Date: _____ Student Initials: _____</p>	<p><input type="checkbox"/> 1st absence – see below <input type="checkbox"/> 2nd absence – see below <input type="checkbox"/> 3rd absence = WA (administratively withdrawn)</p> <p>2 allowable sick days throughout the semester used in 8-hour increments. All used sick time must be made up during make up week at the end of the semester.</p>
<p>Clinical or Class Tardiness/Leave early (tardiness/departure in excess of 1 hour is considered an absence)</p> <p>Date: _____ Student Initials: _____</p>	<p>1st infraction = written warning 2nd infraction = 2 points deducted from final grade 3rd infraction = 2 points deducted from final grade 4th infraction = elevation to category II – 1st infraction 5th infraction = elevation to category II -2nd infraction 6th infraction = elevation to category II – 3rd infraction</p>
<p>Missed Punches on Trajecsyst</p> <p>Date: _____ Student Initials: _____</p>	<p>1st infraction = written warning 2nd infraction = 2 points deducted from final grade 3rd infraction = 2 points deducted from final grade 4th infraction = elevation to category II – 1st infraction 5th infraction = elevation to category II -2nd infraction 6th infraction = elevation to category II – 3rd infraction</p>
<p>Incorrect/inaccurate geolocation on Trajecsyst</p> <p>Date: _____ Student Initials: _____</p>	<p>1st infraction = written warning 2nd infraction = 2 points deducted from final grade 3rd infraction = 2 points deducted from final grade 4th infraction = elevation to category II – 1st infraction 5th infraction = elevation to category II -2nd infraction 6th infraction = elevation to category II – 3rd infraction</p>
<p>Inappropriate personal appearance and/or personal grooming and/or violation of Dress Code per the Program Policy and Clinical Education Manual.</p> <p>Date: _____ Student Initials: _____</p>	<p>1st infraction = written warning 2nd infraction = 2 points deducted from final grade 3rd infraction = 2 points deducted from final grade 4th infraction = elevation to category II – 1st infraction 5th infraction = elevation to category II -2nd infraction 6th infraction = elevation to category II – 3rd infraction</p> <p>Student may be sent home to correct appearance/grooming. Any absence or time missed will be made up.</p>
<p>Cell Phone Infraction – unapproved use of cell phone during clinical or class.</p> <p>Date: _____ Student Initials: _____</p>	<p>1st infraction = written warning 2nd infraction = 2 points deducted from final grade 3rd infraction = 2 points deducted from final grade 4th infraction = elevation to category II – 1st infraction 5th infraction = elevation to category II -2nd infraction 6th infraction = elevation to category II – 3rd infraction</p>
<p>Absence/Tardiness to any mandatory Medical Imaging Department Meeting</p> <p>Date: _____ Student Initials: _____</p>	<p>1st infraction = written warning 2nd infraction = elevation to category II – 1st infraction 3rd infraction = elevation to category III</p>

✓	Category II	✓	Category III
	Action to be Taken: 1 st infraction = 5 points off final grade 2 nd infraction = 10 points off final grade 3 rd infraction = dismissal from program		Action to be Taken: Dismissal from the program and/or college – in accordance with the Program Policies and Procedures Manual and/or the Trocaire College Handbook
	Failure to notify Clinical Placement Coordinator, Clinical Preceptor and Clinical Site of an absence.		Dismissal from a clinical site.
	Unprofessional/disorderly/disruptive behavior Describe:		Unprofessional/unethical conduct and/or non-compliance with Code of Ethics of ARDMS or ARRT
	Leaving assigned clinical area without permission/notification		Disclosure of confidential information or HIPAA violation
	Failure to be alert/sleeping		Falsification/tampering with clinical documents
	Hindering clinical or instructor flow		Tampering with official Trocaire College documents
	Insubordination, to include, but not limited to repeated negative attitudes, actions and/or responses; refusal to perform ordered exams at expected competency levels; refusal to complete didactic and/or clinical assignments as requested and/or required		Academic Dishonesty to include, but not limited to cheating, plagiarism, furnishing false information, or concealing pertinent information to any college/clinical official or office
	Violation of safety rules/regulations on campus or at a clinical site		Causing dissension between or among other program students, program faculty, clinical officials, and/or clinical staff
	Failure to comply with supervision policy (i.e. direct or indirect supervision)		Assault, abuse or negligence with respect to any person
	Unauthorized or intentional misuse of hospital or college equipment/supplies		Theft of hospital or college property/equipment/documents
	Poor quality patient care and/or comfort		Narcotic and/or other drug infractions
	Improper exam protocol/procedure		Possession of weapon(s)
	Elevation from Category 1 Describe:		

***Numerous infractions within the length of the program may result in dismissal from the Medical Imaging Program.
(To be determined by Medical Imaging Department Faculty and Staff)**

Student: _____ Date: _____
Faculty/MICPC/Program Director: _____ Date: _____

***Student signature does not imply agreement. Notification and access to this document will be through Trajecsys**

XIII. SIGNATURE OF ACKNOWLEDGEMENT PAGE

THE STUDENT SIGNATURE PAGE IS CAPTURED AND SAVED ELECTRONICALLY, AND THE PAGE IS PROVIDED AS A SAMPLE OF THE ELECTRONIC VERSION THAT THE STUDENT SIGNS.



**ECHOCARDIOGRAPHY PROGRAM
Memorandum of Agreement**

This signature verifies that I have read and fully understand the Trocaire College Echocardiography Program Policy Manual and that I agree to abide by its guidelines for the duration of time that I am in the Echocardiography Program.

Student Signature: _____ Date: _____

Student Name (printed): _____

Medical Imaging Director's Signature: _____ Date: _____